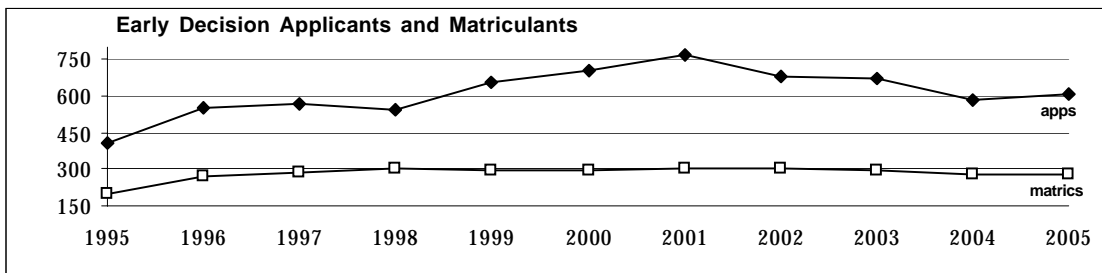
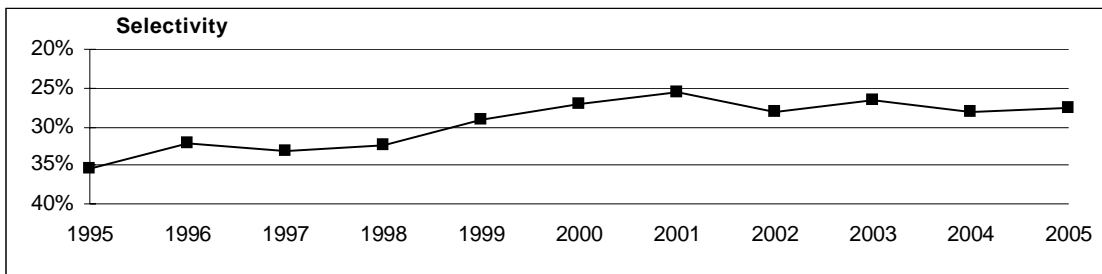
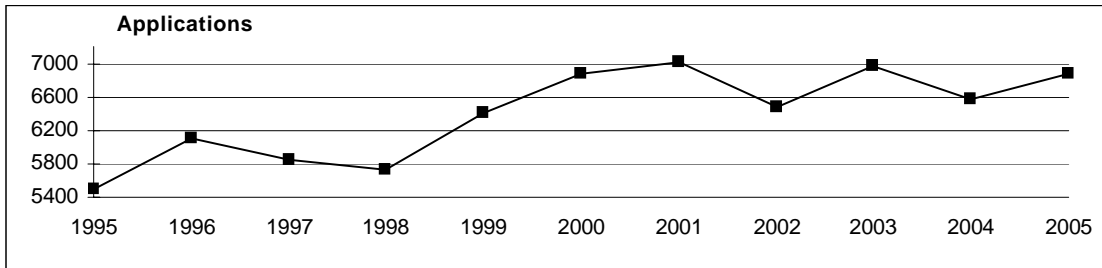


CLASS OF 2009

Profile of Students Offered Admission for 2005

6,879 Applications Received

1,902 Admitted (28%)



2005 Highlights

- Applications increased 5%; 25% growth since 1995
- Selectivity has increased 7 percentage points since 1995
- Early Decision: 9% of applicants and 15% of admission offers
- 81% of admits ranked in the top decile of their high school class
- Admit Median: SATV 720 SATM 710 WR 720 ACT 31
- 102 international students admitted (5% of all admits)
- 79% of admits live outside New England; 7% live outside U.S.
- 41% of admits are Students of Color (37% US citizens/permanent residents)
- 9% of all admits are ESL (English Second Language)
- 13% of admits are the first generation in family to college
- 76% have taken calculus
- 77% have taken biology, chemistry and physics
- 76% have a fourth year of one foreign language

Profile of First Year Students

	Class	2005	2006	2007	2008	2009*
Matriculants		725	720	718	729	717
Men		48%	47.5%	47.5%	47%	49%
Women		52%	52.5%	52.5%	53%	51%
Geography (Home)						
New England		26%	29%	26%	25%	26%
Mid-Atlantic		43%	43%	36%	38%	36%
Mid-West		7%	6%	9%	9%	9%
South		5%	5%	6%	5%	6%
West		11%	9%	14%	13%	16%
Outside the USA		7%	6%	8%	9%	8%
Secondary School						
Public		57%	56%	58%	58%	56%
Other		43%	44%	42%	42%	44%
Early Decision		41%	42%	40%	38%	39%
Students of Color (including international)		31%	28%	31%	31%	34%
Asian/Asian-American		11%	13%	14%	16%	17%
Black/African-American		11%	8%	8%	6%	9%
Latino/Hispanic		8%	6%	9%	8%	9%
International Students		5%	6%	6%	7%	7%
Freeman Asian Scholars		3%	3%	3%	3%	3%
Wesleyan Relatives		16%	14%	13%	16%	16%
Alumni Children		8%	6%	4%	5%	6%
First Generation to Four-Year College		9%	12%	15%	10%	12%
Financial Aid		42%	45%	49%	44%	42%
Grant Aid		37%	42%	45%	42%	39%
Academic Program in HS						
Math through Calculus		69%	72%	68%	70%	74%
Biology, Chemistry and Physics		76%	77%	77%	78%	80%
Foreign Language IV		74%	74%	69%	70%	79%
Class Ranking						
Class Rank Reported		51%	52%	57%	50%	51%
Top 10%		72%	73%	73%	66%	71%
Top 20%		91%	90%	91%	88%	88%
SAT Medians	Verbal	690	700	700	700	700
	Math	690	690	690	700	700
	SAT2 WR	700	710	700	720	710
ACT Median		30	30	31	31	30
Applications		7,014	6,474	6,955	6,568	6,879
Admitted		1,796	1,818	1,854	1,843	1,902
Selectivity		26%	28%	27%	28%	28%
Yield		40%	40%	39%	40%	38%

*Class of 2009 as of August 1, 2005

G Pyke 8/1/05