

# WESLEYAN UNIVERSITY

# PROFILE

70 Wyllys Avenue, Middletown, CT 06459, 860-685-3000

## Profile of Students *Offered Admission* for 2008

It is not possible to fully convey the individual strengths and differences among students selected for Wesleyan in a statistical profile. What we hope to suggest with these facts is what we value in the admission process. No specific high school program is prescribed for admission but admitted students have taken advantage of the specific curricular offerings of their high school to get the most out of their education, whether through AP courses, International Baccalaureate Diploma, local college courses or simply the most challenging teachers. Their curiosity and love of learning travels with them. Rank in Class and ACT or SATI&II are generally quite strong but more telling in our assessment are the academic program and teacher recommendations. The admitted students are diverse in nationality, region, first language, race, ethnicity and socio-economic status. The variety of talents and commitments to school groups, civic and religious organizations, politics and the arts makes successful candidates more likely to contribute to the life of this vibrant community called Wesleyan.

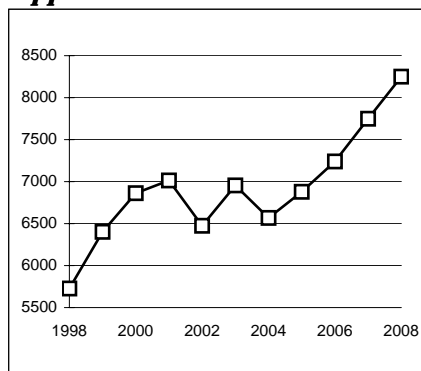
### 8,250 Applications Received

2,242 Admitted (27%)

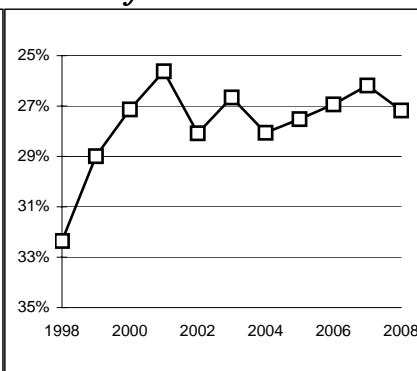
- 2008 vs 1998 Highlights Applications increased 6%; 44% growth since 1998  
Selectivity has increased 4 percentage points since 1998
- 82% of admits live outside New England; 8% live outside U.S.
- 38% of admits are Students of Color (33% US, 5% international)
- 10% of all admits are ESL (English Second Language)
- 158 international students admitted (7% of all admits)
- 14% of admits are the first generation in family to college
- Early Decision: 8% of all applicants (650) and 13% of all admission offers (296)
- HS Program and Rank: 82% have taken calculus  
83% have taken biology, chemistry and physics  
77% have a fourth year of one foreign language  
80% of admits ranked in the top decile of their high school class

SAT and ACT scores	SATCR	SATM	SATW	ACT
Admit 75th %ile:	760	760	760	33
Admit Median:	720	710	720	32
Admit 25th %ile:	670	670	670	30

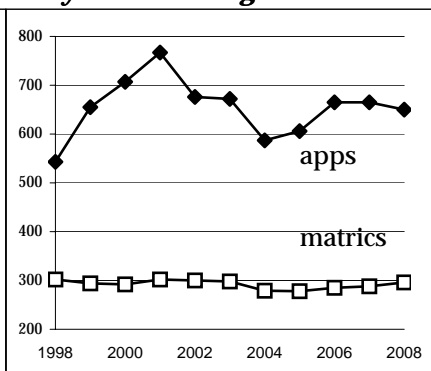
### Applications



### Selectivity



### Early Decision Program



<b>Profile of First Year Students</b>		2003	2004	2005	2006	2007
	<b>Class</b>	<b><u>2007</u></b>	<b><u>2008</u></b>	<b><u>2009</u></b>	<b><u>2010</u></b>	<b><u>2011*</u></b>
<b>Applicants</b>		<b>6,955</b>	<b>6,568</b>	<b>6,879</b>	<b>7,241</b>	<b>7,750</b>
<b>Admitted</b>		<b>1,854</b>	<b>1,843</b>	<b>1,902</b>	<b>2,005</b>	<b>2,123</b>
<b>Matriculants</b>		<b>718</b>	<b>729</b>	<b>717</b>	<b>720</b>	<b>733</b>
	Men	47.5%	47%	49%	51%	49%
	Women	52.5%	53%	51%	49%	51%
<b>Geography (Home)</b>						
	New England	26%	25%	26%	24%	24%
	Mid-Atlantic	36%	38%	36%	39%	38%
	Mid-West	9%	9%	9%	8%	6%
	South	6%	5%	6%	5%	7%
	West	14%	13%	16%	16%	17%
	Outside the USA	8%	9%	8%	7%	9%
<b>Secondary School</b>						
	Public	58%	58%	56%	57%	55%
	Other	42%	42%	44%	43%	45%
<b>Early Decision</b>		40%	38%	39%	39%	40%
<b>Students of Color (including international)</b>		31%	31%	34%	32%	32%
	Asian/Asian-American	14%	16%	17%	15%	15%
	Black/African-American	8%	6%	9%	7%	8%
	Latino/Hispanic	9%	8%	9%	10%	8%
<b>International Students</b>		6%	7%	7%	6%	7%
<b>Freeman Asian Scholars</b>		3%	3%	3%	3%	3%
<b>Wesleyan Relatives</b>		13%	16%	16%	13%	17%
	Alumni Children	4%	5%	6%	4%	5%
<b>First Generation to Four-Year College</b>		15%	10%	12%	14%	14%
<b>Financial Aid</b>		49%	44%	42%	42%	46%
	Grant Aid	45%	42%	39%	38%	41%
<b>Academic Program in HS</b>						
	Math through Calculus	68%	70%	74%	71%	72%
	Biology, Chemistry <u>and</u> Physics	77%	78%	80%	75%	79%
	Foreign Language IV	69%	70%	79%	72%	80%
<b>Class Ranking</b>						
	Class Rank Reported	57%	50%	51%	54%	51%
	Top 10%	73%	66%	71%	68%	71%
	Top 20%	91%	88%	88%	88%	90%
<b>SAT Medians</b>	Verbal/Critical Reading	<b>700</b>	<b>700</b>	<b>700</b>	<b>700</b>	<b>700</b>
	Math	<b>690</b>	<b>700</b>	<b>700</b>	<b>700</b>	<b>690</b>
	Writing	---	---	---	<b>690</b>	<b>700</b>
	SAT2 Writing	<b>700</b>	<b>720</b>	<b>710</b>	<b>710</b> <sup>^</sup>	---
<b>ACT Median</b>		<b>31</b>	<b>31</b>	<b>30</b>	<b>30</b>	<b>30</b>

\*Class of 2011 as of September 2007

<sup>^</sup>9% of matriculants in 2006 took SAT2 Wr as Juniors