

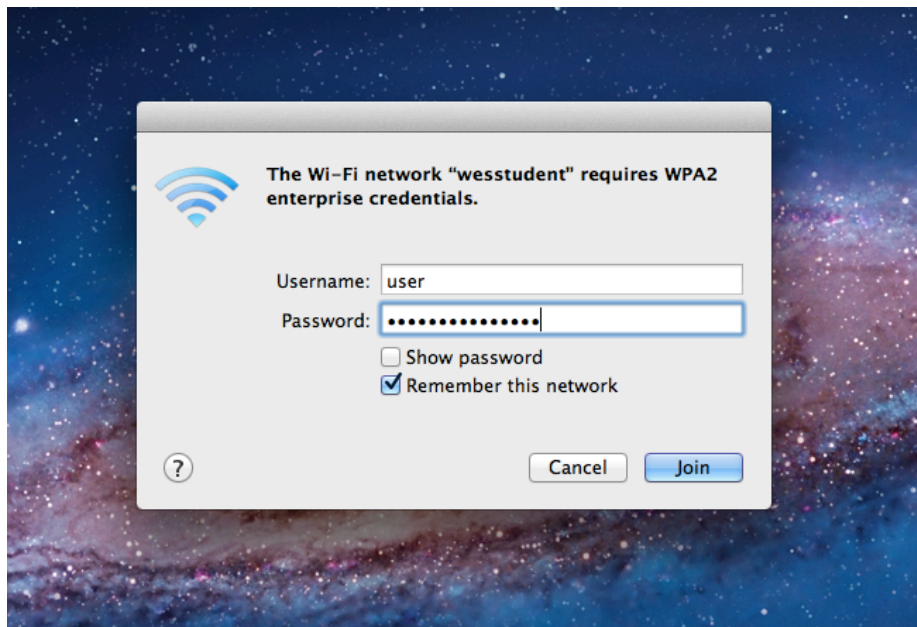
How to Connect to the New Wireless Network (Mac 10.7 Lion)

The following instructions work for both **wesfacstaff** and **wesstudent**. Connect to the appropriate network. Your credentials will dictate your access. Student accounts cannot use **wesfacstaff** nor faculty/staff accounts use **wesstudent**. The below screen shots show **wesstudent** but are the same for **wesfacstaff**.

Unplug any other network cables from your computer. Click on the **WiFi Icon** at the top right and select **wesstudent**.



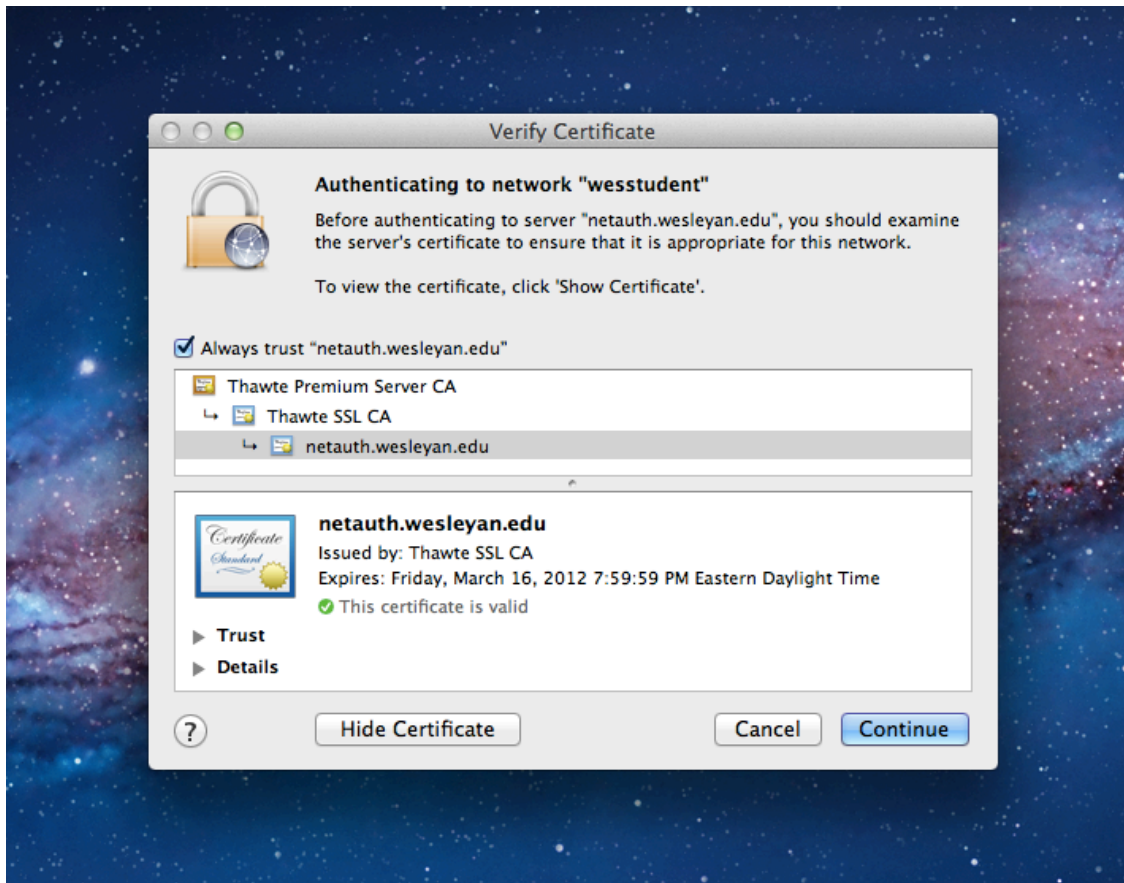
Lion will prompt you for your network credentials. Enter your Wesleyan username and password.



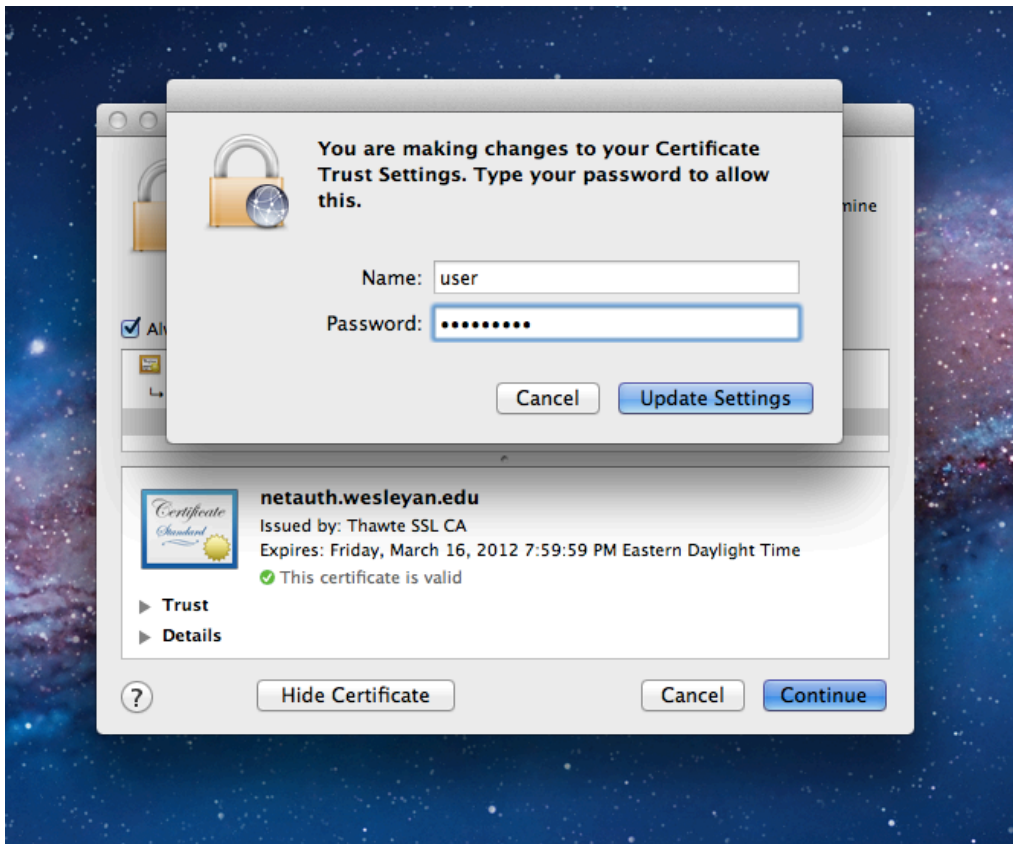
Check the box for **Remember this Network**



Lion needs your approval for the Wesleyan Network's server certificate. Click **Continue** or if you want to find out more, click on **Show Certificate** – which will look like this:

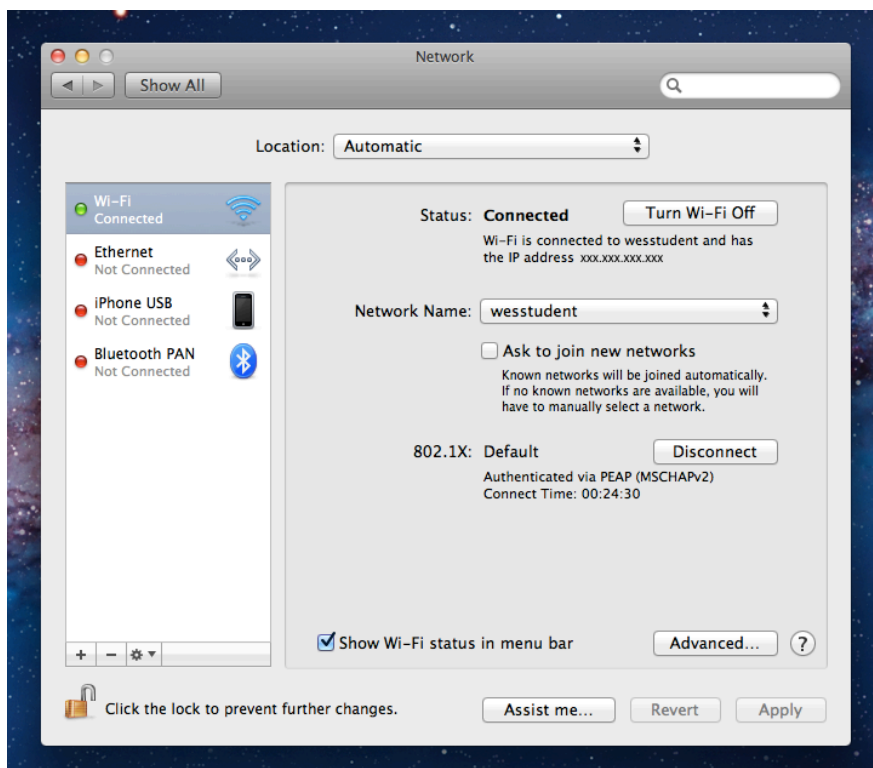


Click on **Continue**



Lion will need your Computer Username and Password, not your Wesleyan Credentials, to save these settings for the future.

Lion will connect automatically to wesstudent. Open Network Preferences to see if you are connected. 802.1X should be connected and authenticated at the bottom right. Your screen should look similar to this:



Open Safari or whichever web browser you prefer. You will not have to enter your information in again like you've had to do before. Cisco should automatically connect and will redirect you for Internet usage.

You are now connected to **wesstudent!**

For future logins, **Wi-Fi should automatically connect to wesstudent from now on. Ensure that you are connected, and then open your web browser of choice. Cisco will connect you automatically for Internet access. The network has changed, but you are still under Wesleyan University's same Internet policies and regulations.