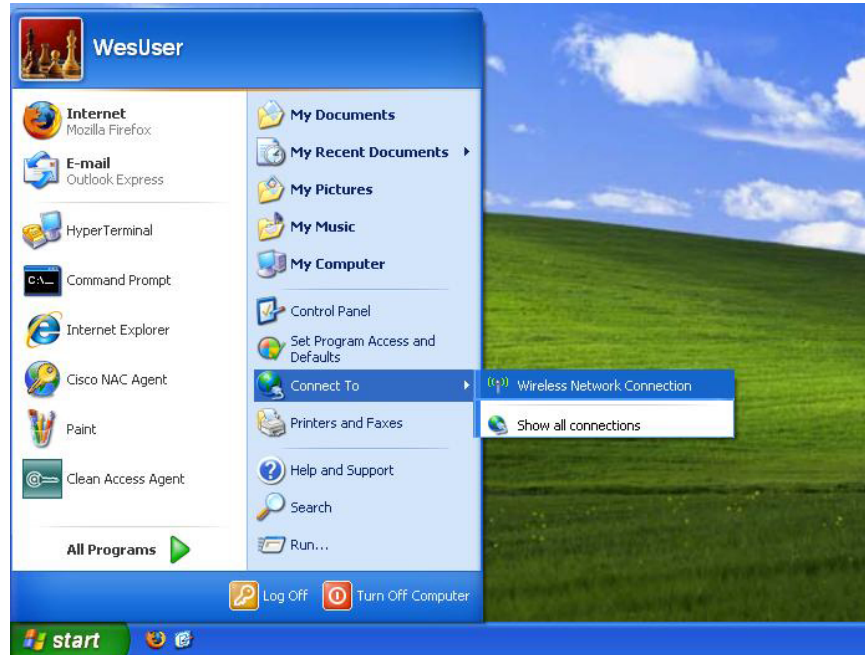


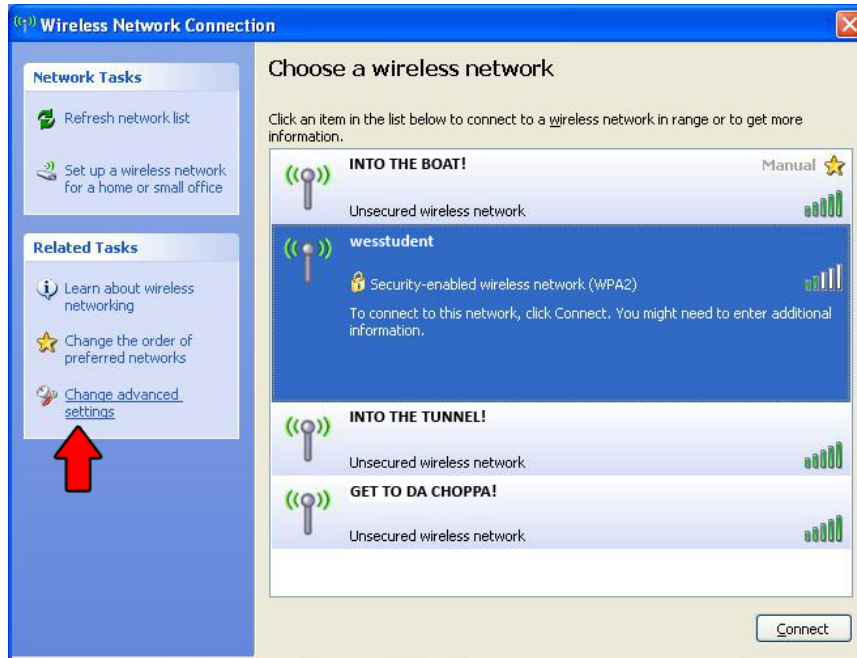
## **How to Connect to the New Wireless Network (XP)**

*The following instructions work for both **wesfacstaff** and **wesstudent**. Connect to the appropriate network. Your credentials will dictate your access. Student accounts cannot use wesfacstaff nor faculty/staff accounts use wesstudent. The below screen shots show wesstudent but are the same for wesfacstaff.*

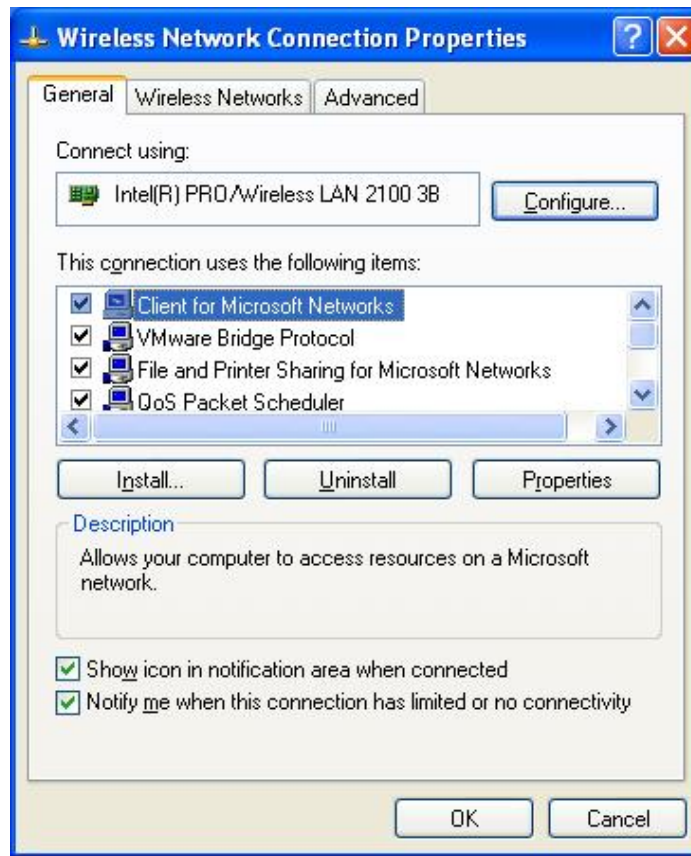
Go to the **Start Menu** and go to **Connect to > Wireless Network Connection**.



You should be in range of the network **wesstudent** or **wesfacstaff**, click on the appropriate network and click on **Change Advanced Settings** on the left sidebar.

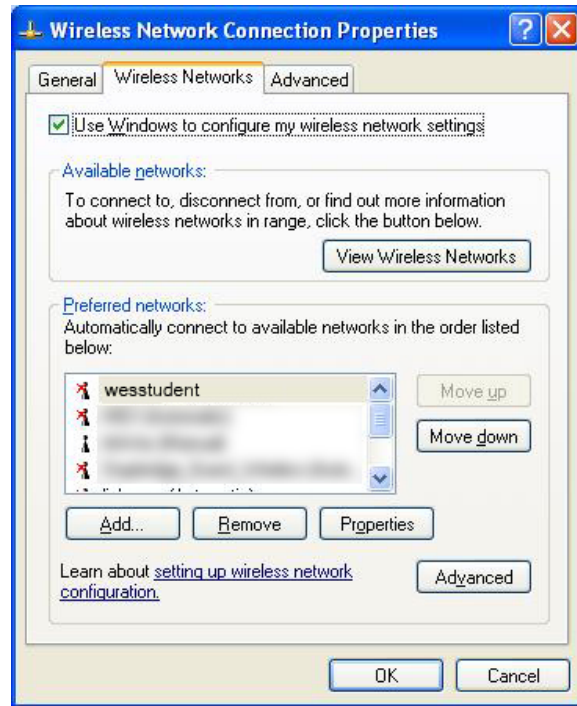


You should see this window open on your screen:

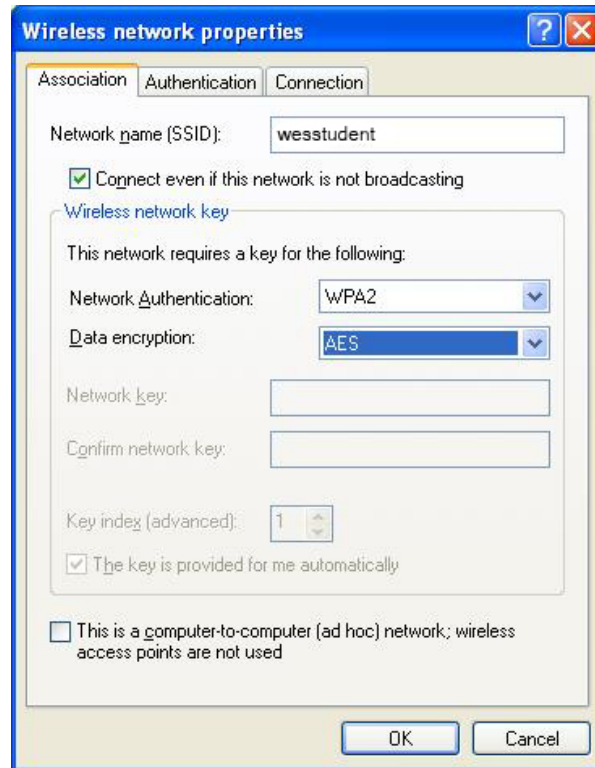


Click on **Wireless Networks** at the top.

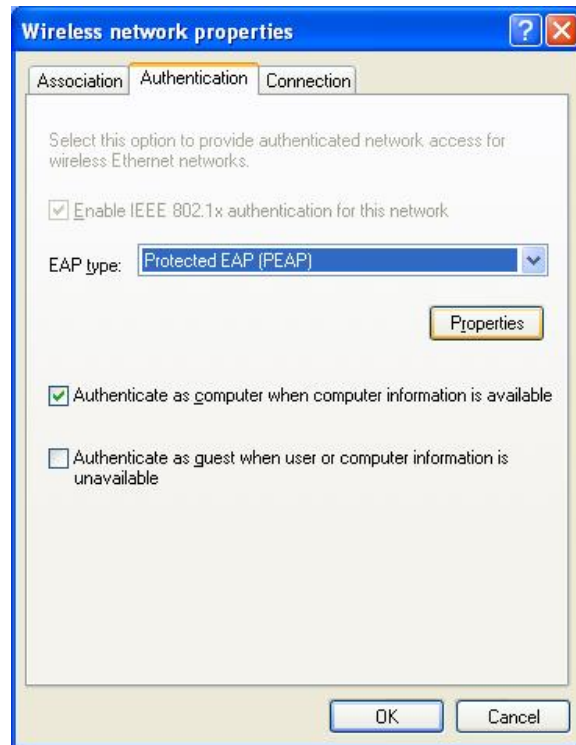
You should now see the list of wireless networks your computer has saved.



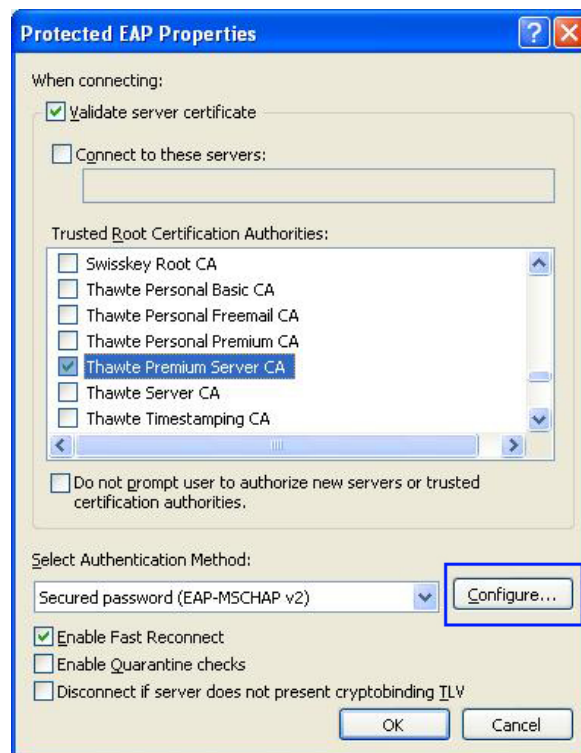
Click on the network **wesstudent** or **wesfacstaff** if it is visible, then click **Properties**. If not, click the **Add...** button at the bottom left and you should see this window:



Type in the network name **wesstudent** or **wesfacstaff** (no capitals), if it isn't there already.  
Check the option to **Connect even if this network is not broadcasting**.  
Change **Network Authentication** to **WPA2** and **Data Encryption** to **AES**  
Click on **Authentication** at the Top.



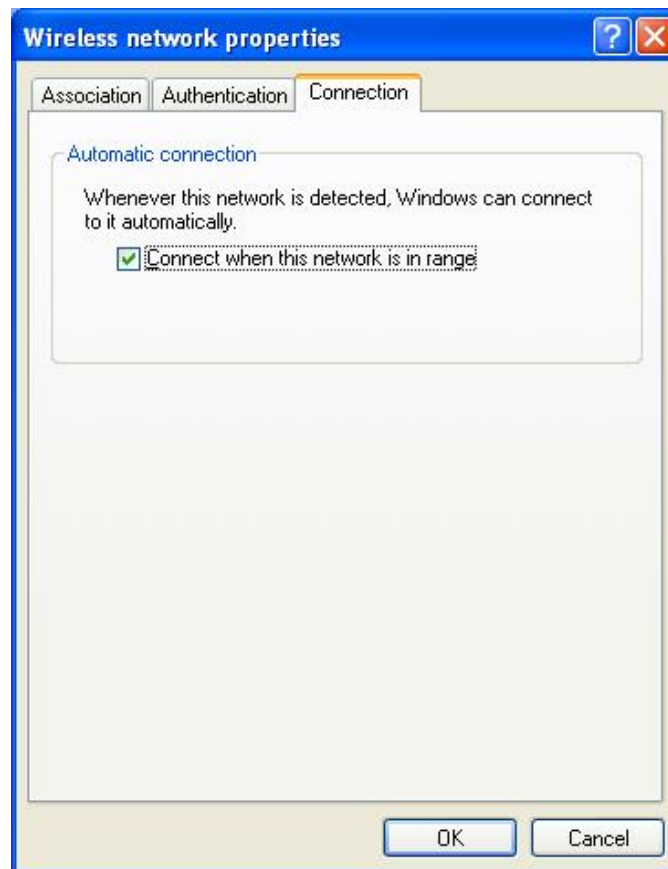
**EAP type** should also be set to **Protected EAP (PEAP)** and make sure you check the box underneath to **Authenticate as Computer when Computer Information is Available**. Click on **Properties**



Check the box to **Validate Server Certificate**  
Scroll down the **Trusted Root Certification Authorities List**  
Check the box next to **Thawte Premium Server CA**  
Make sure the **Authentication Method** is **Secured password (EAP-MSCHAP v2)**  
Click **Configure**



**Uncheck** the box in the popup window. Click ok  
Click on **Connection** at the Top, Check the box to **Connect when network is in range**



Close out of all of the windows, making sure to click **OK** for each one when closing. Now connect to **wesstudent** or **wesfacstaff**, if it isn't connecting already. Windows will proceed to ask you for additional login information.



Enter your Wesleyan username (not your full email) and password as you normally would. There is no need to type anything in the logon domain field.

Windows will connect to the network and Cisco should open.

Cisco may ask for you to update. Click ok.

Once the update is finished, Cisco should automatically connect to the network.

Agree to the terms and conditions.

You are now connected to the Network!

**\*\*For future logins, XP should automatically connect because of the **user profile** we have just created. Ensure that you are connected, and then open your web browser of choice. Cisco will connect you automatically for Internet access. The network has changed, but you are still under Wesleyan University's same Internet policies and regulations.**