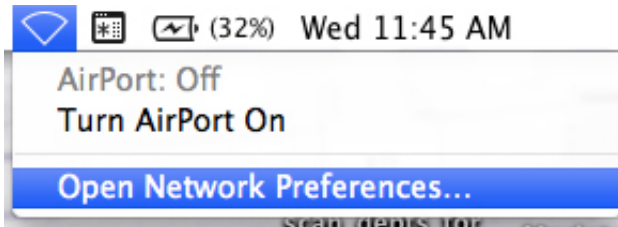
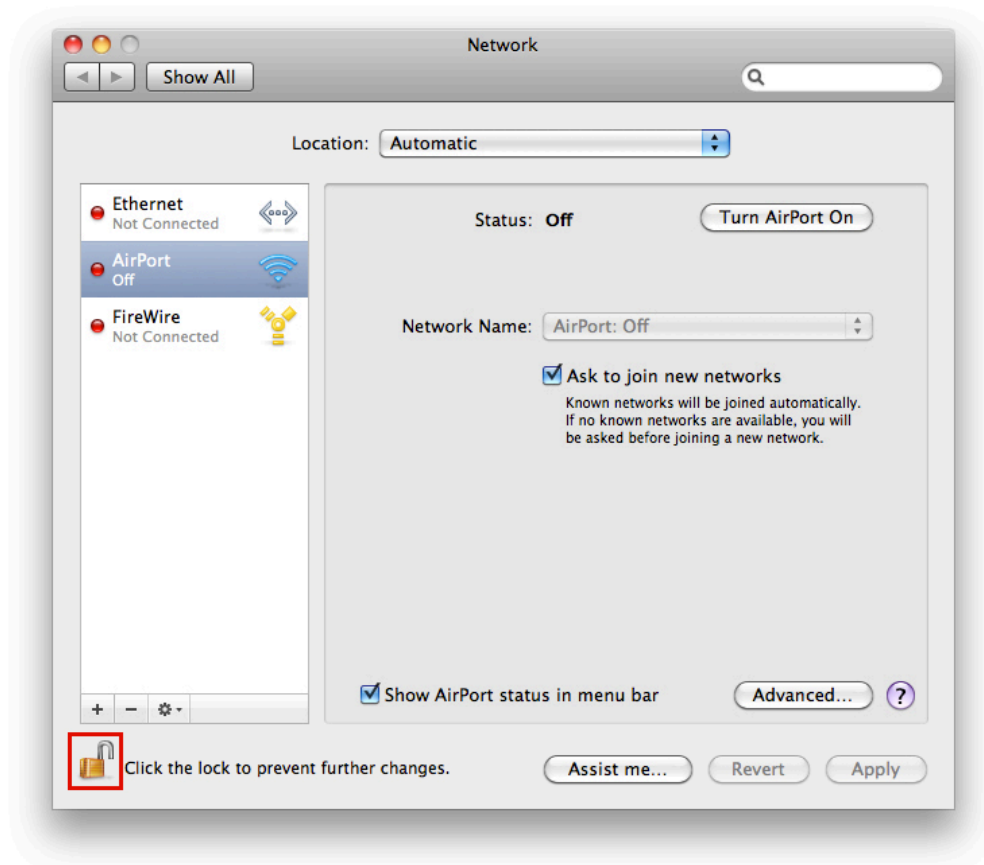


How to Connect to the New Wireless Network (Mac 10.5)

Unplug any other network cables from your computer. Turn **Airport Off** (or **WiFi** if you are using OS X Lion). Do this by clicking on the **WiFi Icon** at the top right and select **Turn Airport Off**.



Open Network preferences by clicking on the **WiFi icon** at the top right and selecting it from the dropdown menu. This window will appear:



****Make sure the Lock at the bottom left is unlocked so you are able to make changes to your network settings. Click on it if it is Locked and Enter your Mac Username and Password if it prompts you****

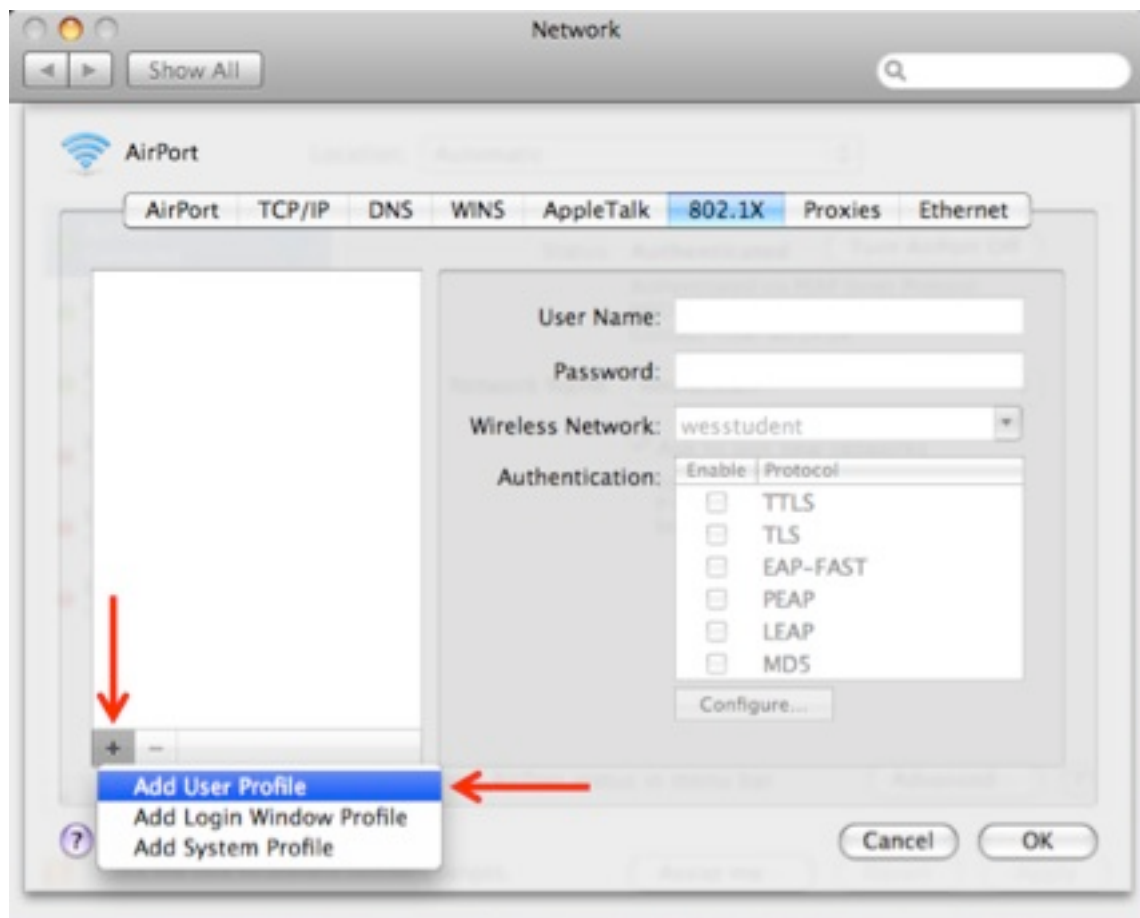
Now **Turn Airport On** (or Wi-Fi if using Lion) using the button at the top right, but do not select a wireless network.

Click on **Advanced...** at the bottom right.

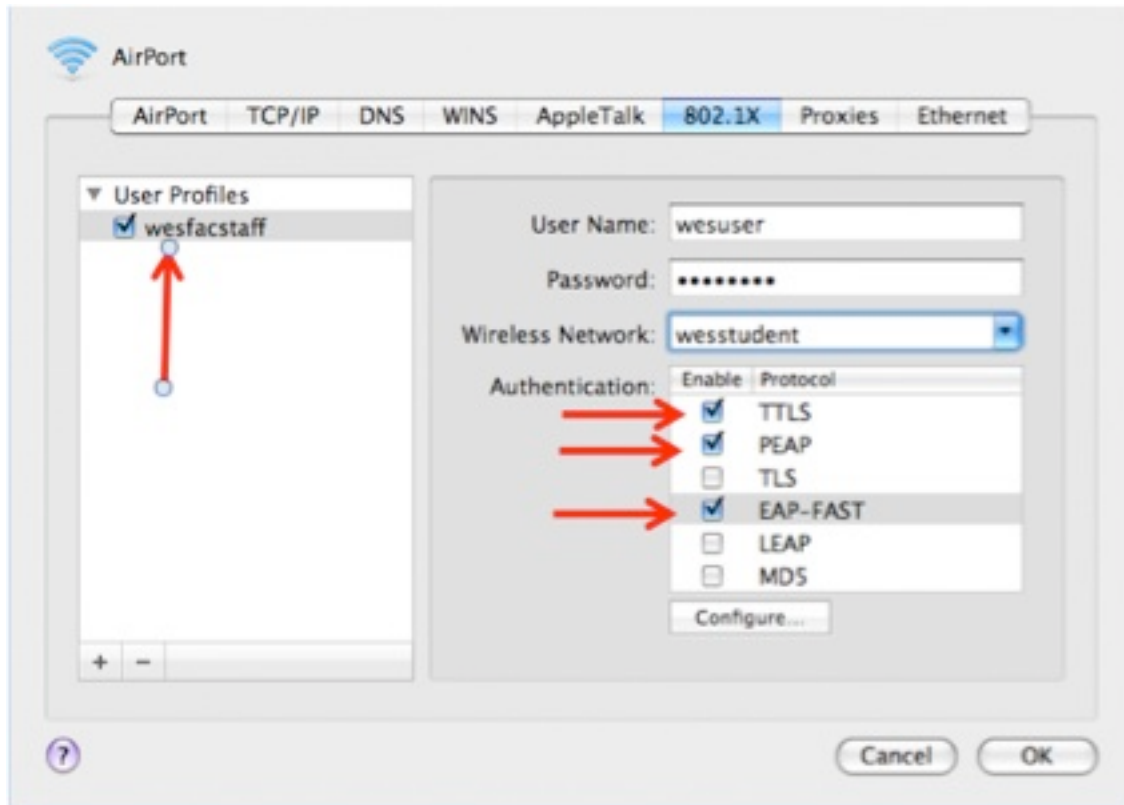
Click the heading “**802.1X**”, shown by the red arrow.

Everything should be blank at this point. If you have any profiles setup on the left hand side, uncheck them for now. Click the (+) at the bottom left.

Click **Add User Profile...**



Under **User Profiles**, a text edit “Untitled” box will appear for you to name the network profile. Name it “wesstudent” or “wesfacstaff” depending on which network you are trying to connect to.



For **User Name** and **Password**, enter your Wesleyan username (not your full email address) and password.

Under “**Authentication:**” check **TTLS**, **PEAP**, and **EAP-FAST**.

For **Wireless Network:** choose **wesstudent** or **wesfacstaff** for which network you are attempting to connect to.

Click **Ok** at the bottom right.

You should now be taken back to the main **Network Settings** page.

Click on **Advanced...** at the bottom right.

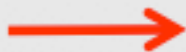
Click the heading “**AirPort**”, then select the plus (+) to add a new network name.



AirPort TCP/IP DNS WINS AppleTalk 802.1X Proxies Ethernet

Preferred Networks:

Network Name	Security
--------------	----------



+ - ✎ Drag networks into the order you prefer to join.

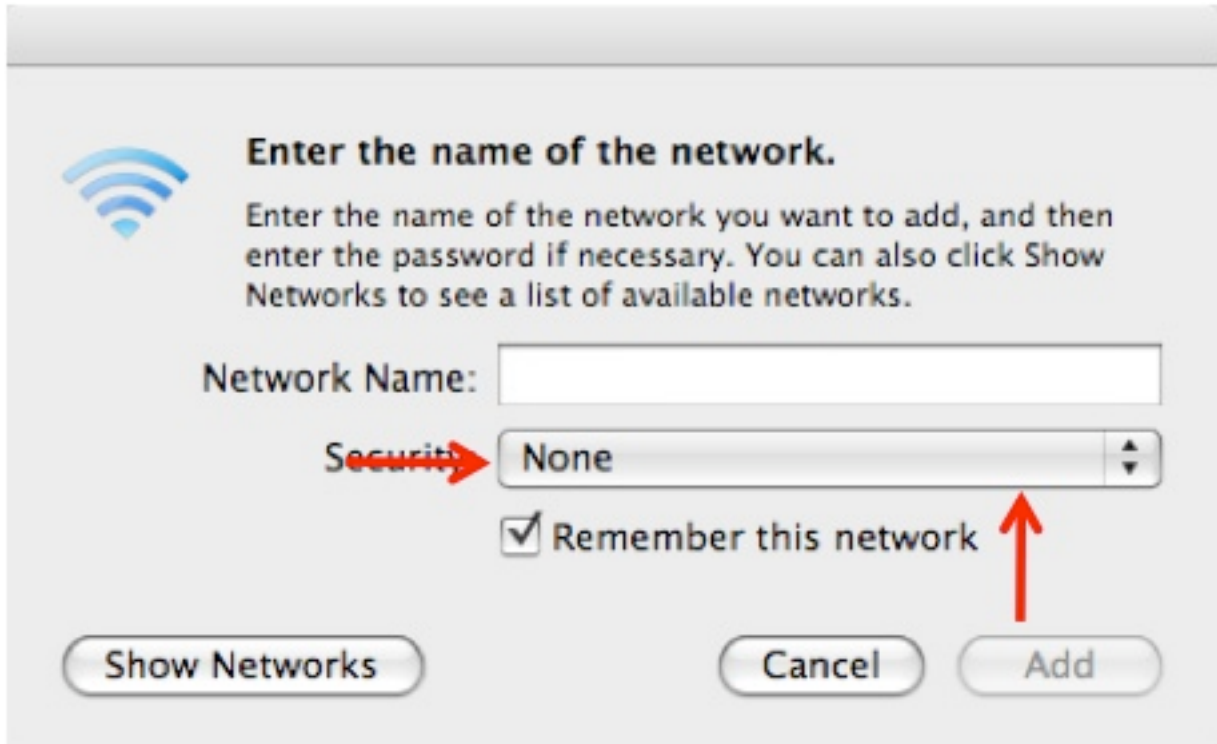
- Remember any network this computer has joined
- Disconnect from wireless networks when logging out
- Require Administrator password to control AirPort

AirPort ID: 00:19:e3:0d:4b:8f



Cancel

OK



Click the drop down menu next to **Security** and select **WPA2 Enterprise**

Click Add.



Click the drop down menu next to **802.1X** and select your user profile (wesstudent/wesfacstaff). This should cause the username and password fields to be filled in. If not fill them in with your Wesleyan username and password.

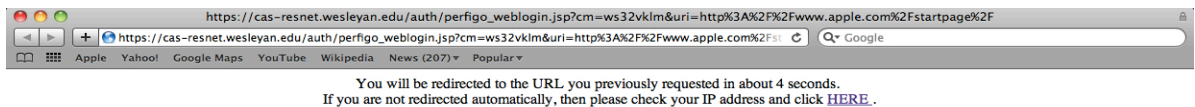
Type in the network (wesstudent or wesfacstaff) in the **Network Name** field.

Click **Add** in the bottom right of the screen.

You should now be taken back to the main **Network Settings** page.

After a few seconds, you should be connected. Underneath should be listed the duration you've been connected to the network. Click on **Apply** at the bottom right and now you may exit out of **Network Settings**.

Open Safari or whichever web browser you prefer. You will not have to enter your information in again like you've had to do before. Cisco should automatically connect and will redirect you for Internet usage.



You are now connected!

For future logins, **Airport should automatically connect because of the **user profile** we have just created. Ensure that you are connected, and then open your web browser of choice. Cisco will connect you automatically for internet access. The network has changed, but you are still under Wesleyan University's same Internet policies and regulations.