



Give your students a chance to experience an exciting and educational planetarium program without:

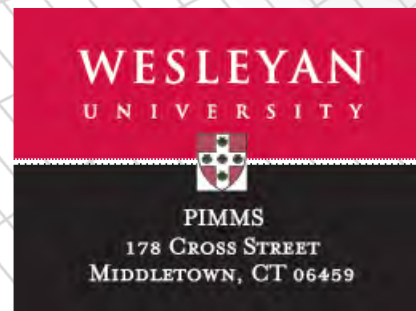
- Admission expense
- Transportation expense
- **The** need for chaperones
- **The** need to miss other subjects

*Presentations typically require approximately one hour, including time to move students into and out of the planetarium. Up to five presentations can be scheduled in one school each day. Multiple days can be scheduled in a single school or in multiple schools in a single district.*

- One day - \$600.
- Two days - \$1,000.
- Three days - \$1,450.
- Each additional evening - \$300.
- Days and evenings must be consecutive.

**Presentations can be customized to meet your school or district needs:**

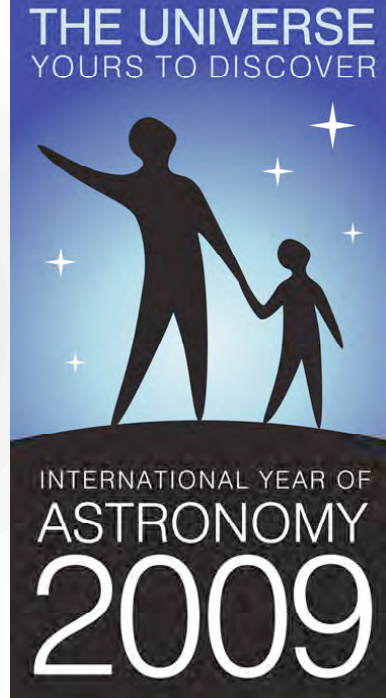
- Combine a half-day of student planetarium tours with a half-day of professional development for staff.
- Combine planetarium tours with classroom presentations.
- Include outdoor presentations on measuring solar angles, latitude and longitude.



**Contact: Robert Borello**  
**Phone: (860)685-6459**  
[rborello@wesleyan.edu](mailto:rborello@wesleyan.edu)  
[www.wesleyan.edu/pimms](http://www.wesleyan.edu/pimms)

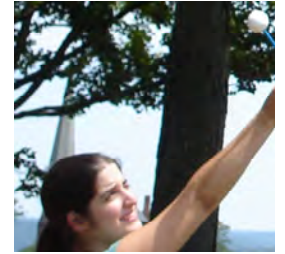
# Astronomy in a Portable Planetarium

*Bring an exciting field trip experience to your school.*



## View the nighttime sky in your classroom

*“The International Year of Astronomy coincides with the 400th anniversary of the first recorded astronomical observations with a telescope by Galileo and the publication of Kepler's Astronomia Nova in the 17th century..”*



# Let PIMMS Bring a Field Trip to You.

*With school budgets under pressure, you don't have to give up field trips. Instead of incurring the expense of traveling, let PIMMS bring a “field trip to you.”*

PIMMS is offering special Star Lab programs for school presentations. There are two types: one for lower elementary and a second for upper elementary/middle school. However, either can be adjusted to meet the needs of your school and grade level.

A PIMMS consultant will bring the Star Lab to your school and offer “star tours” that vary according to the level of class participating.

Both will include a brief presentation on the history of the telescope and the significance of Kepler's published work.

The lower grade presentation will feature the location of the Big Dipper and its relevance to “follow the drinking gourd” in American history. From the location of the Big Dipper, the circumpolar constellations will be identified and the stories from Greek and Native American mythology will be told. The revolution and rotation of Earth will also be demonstrated with a focus upon the apparent movement of the sun.

The intermediate/middle school presentation will also begin with the Big Dipper and include the movement of the Earth. In addition star brightness, color, relative distances and sizes, and types of stars are discussed.

### Programs can be extended into the evening.

- You can include parents in your “trip to the planetarium,” by scheduling an evening presentation to coincide with a parent association meeting.
- After school presentations for scout groups or other youth activities can be added.



*The star lab can accommodate classes of approximately 25 students with the teacher present. Presentations will be approximately 40 minutes in length, with a maximum of 5 presentations in a school day. A large classroom with a ceiling clearance of at least 10 feet is required.*

### Presentations aligned with State Science Curriculum Framework

- 1.1 The sun appears to move across the sky in the same way every day, but its path changes gradually over the seasons.
- 5.3 Most objects in the solar system are in a regular and predictable motion.
- 5.5 Humans have the capacity to build and use tools to advance the quality of their lives.
- 8.3 The solar system is composed of planets and other objects that orbit the sun.

