



సునేహగతం  
vitáme tē  
Tuloy ka  
välkommen  
swagata  
καλώς ορίσατε  
salaam  
willkommen  
dobrodošli  
ようこそ  
nannaste  
Nyob zoo  
欢迎  
mabuhay  
benvenuto  
tervetuloa  
fogadtatás  
shalom  
welkom  
bienvenido  
bienvenue  
aloha  
स्वागत  
환영합니다  
ahlan'wa sahla  
الدهس و الهدأ



**W**elcome to Wesleyan University! We understand the stress and difficulty of getting started in a new country and a new culture. We hope the resources provided here will help alleviate some of your challenges. The goal of this booklet is to assist you as you acclimate to Wesleyan University and Middletown, Connecticut.

## YOUR CHECKLIST

### REQUIRED:

- Finalize process to receive your Exchange Visitor/J-1 Visa
- Review materials received in the **Visa Welcome Packet** from Jennifer Bomar
- Meet with **Jennifer Bomar** within 10 days of arrival to validate your arrival within SEVIS
- Meet with your **Faculty Host/ Advisor**
- Go to **ResLife** (North College-basement) to sign your lease and pay your security deposit \$200, and pick up your house keys (if you don't have your keys yet)
- Get a **Wes ID** from North College, Office 111 (Hours: 9am-12pm and 1pm-3:45pm)
- Visit **Cheryl Hagner** in the Office of Graduate Student Services in Exley Science Center
- Visit **Kia Lor** in the Fries Center for Global Studies in Fisk Hall (FLTA Office + Lounge)
- Romance Language FLTAs: The first business day after you arrive, come to the Romance Language building (300 High Street) to meet **Kristine Schiavi**, take a tour and see what you can borrow for your house. She's in the office from 8:30 - 12 pm and 1-3pm.*



## **CHERYL-ANN HAGNER**

Director of Graduate Student Services  
Exley Science Center, Room 132  
265 Church Street  
(860) 685-2223  
[chagner@wesleyan.edu](mailto:chagner@wesleyan.edu)

## **BARBARA W. SCHUKOSKE**

Administrative Assistant  
Exley Science Center Room 130  
265 Church Street  
(860) 685-2224  
[bschukoske@wesleyan.edu](mailto:bschukoske@wesleyan.edu)

## **KIA LOR**

Assistant Director of Language and  
Intercultural Learning  
262 High St., 201C Fisk Hall  
(860) 685-3686  
[klor@wesleyan.edu](mailto:klor@wesleyan.edu)

## **EMMANUEL PARIS-BOUVRET**

Director of Languages Resources  
and Technology  
262 High St., 201G Fisk Hall  
(860) 685-2560  
[eparis@wesleyan.edu](mailto:eparis@wesleyan.edu)

## **KRISTINE SCHIAVI**

Administrative Assistant in Romance  
Languages and Literature  
(860) 685-2830  
[kschiavi@wesleyan.edu](mailto:kschiavi@wesleyan.edu)

## **KATHLEEN NORRIS**

Temporary Administrative Assistant in  
the College of East Asian Studies  
(860) 685-2330  
[knorris@wesleyan.edu](mailto:knorris@wesleyan.edu)

## **JENNIFER BOMAR**

Faculty Resource and Immigration  
Specialist (J-1 Visas)  
North College, 237 High Street  
(860) 685-3090  
[jbomar@wesleyan.edu](mailto:jbomar@wesleyan.edu)

## **LANGUAGE SECTION HEADS**

### French Section

Catherine Ostrow  
Jeff Rider  
Typhaine Leservot

### Spanish Section

Louise Neary  
Ana Perez-Girones  
Maria Ospina

### Italian Section

Camilla Zamboni  
Ellen Nerenberg

### Chinese Section

Xiaomiao Zhu

### Japanese Section

Naho Maruta

### Korean Section

Hyejoo Back

## **Helpful University Links**

- [Admission Tour Schedule](#)
- [Campus Map](#)
- [Employee Discounts and Services](#)
- [Event Scheduling](#)
- [Holiday Schedule](#)
- [Human Resources](#)
- [Public Safety](#)
- [Office of Equity and Inclusion](#)
- [Volunteer Opportunities](#)
- [Wesleyan 2020 Strategic Plan](#)
- [Wesleyan News](#)
- [Wesleyan Magazine](#)
- [University Calendar](#)

## **IN CASE OF EMERGENCY**

**WESLEYAN OFFICE OF PUBLIC SAFETY**  
Emergency 860-685-3333  
Non-Emergency 860-685-2345

**THE MIDDLETOWN POLICE DEPT.**  
Emergency 911  
Non-Emergency 860-347-2541

**THE MIDDLETOWN FIRE DEPARTMENT**  
Emergency 911  
Non-Emergency 860-346-8622

**POISON CONTROL CENTER**  
1-800-222-1222

We recommend that you arrive prepared with access to approximately **\$2,000 USD** to get yourself settled at Wesleyan. Depending on your situation, you could incur expenses for the following:



## GRADUATE HOUSING DEPOSIT

A **\$200** housing deposit is due when the student signs the lease. The deposit can be cash, money order, personal check, or wire transfer. The deposit will be returned *with interest* when the student leaves University housing. Any charges incurred by Physical Plant or Residential Life will be deducted from the deposit.



## HEALTH INSURANCE PREMIUM

University policy mandates that all students maintain health insurance. Please see your offer letter for details on the amount that Wesleyan will cover, as well as the amount you will be responsible for. The amount you are responsible for will be charged to your student account at the end of September. You can find more information [here](#). For questions related to insurance, you may contact [graduateoffice@wesleyan.edu](mailto:graduateoffice@wesleyan.edu)



## HEALTH IMMUNIZATIONS

The State of Connecticut requires proof of certain immunizations. Forms should be emailed to [healthforms@wesleyan.edu](mailto:healthforms@wesleyan.edu). Find forms [here](#). If you require lab tests or vaccines, the out-of-pocket costs are approximately **\$150-\$350**. Please refer to your offer letter for information on deadlines.



## GSA FEE

A fee will be charged to each graduate student's student account for the [Graduate Student Association \(GSA\)](#) student activity fee. Please refer to your offer letter for information on the exact amount.



## GROCERIES AND HOUSEHOLD ITEMS

The [Transportation Department](#) offers a **free local grocery shuttle service** every Sunday from 12:30pm-3:30pm. The van leaves from the Usdan University Center and travels to two local grocery stores -- Aldi and Price Chopper -- and returns to Usdan.

The Graduate Student Association also hosts a shopping trip during orientation week to bring students to local stores to purchase household items that you were not able to bring with you (i.e. bedding, kitchen supplies, etc).



## LAUNDRY

Laundry facilities are available on campus. You swipe your [WesCard](#) or [Mac-Gray Card](#) (depending on your residence) to pay for using the washers and dryers.



## BOOKS

Books that are required for classes are sold at the [University book store](#). Payment is via credit card, cash, or check.



## STIPEND PAYCHECK DATES

Stipends are paid on the 15th of the month and the last day of each month.



## **Allbritton Center**

222 Church Street, Middletown, CT 06459  
860-685-3145

The Allbritton Center is the hub of civic engagement at Wesleyan. We study public life, actively partner with the local and regional community, and teach practical skills for social impact. The Allbritton houses these other centers:

- [Allbritton Center for the Study of Public Life](#)
- [Service-Learning Center](#)
- [Jewett Center for Community Partnerships](#)
- [Center for Prison Education](#)
- [Patricelli Center for Social Entrepreneurship](#)



## **Fries Center for Global Studies (FCGS)**

Fisk Hall, Second Floor  
262 High Street, Middletown, CT 06459  
860-685-2550

The Fries Center for Global Studies is committed to helping all members of the Wesleyan community achieve the knowledge, language skills, and sensitivity each person will need in order to exercise effective and responsible citizenship in an increasingly inter-dependent world. The FCGS houses these offices:

- [Study Abroad](#)
- [Fellowships and Exchanges](#)
- [Language and Intercultural Learning](#)
- [Language Resources and Technology](#)



## **Gordon Career Center (GCC)**

Boger Hall  
41 Wyllys Ave. Middletown, CT 06459  
860-685-2180

Gordon Career Center works with students of all class years to translate their liberal education into a lifetime of meaningful work. The Center's innovative approach to career education encourages students to design their own careers by exploring the intersection among their interests, the skills they have and wish to acquire, and market demand. The Gordon Career Center links students to alumni and employers across the globe in fields that reflect the impressive breadth of opportunities explored by Wesleyan graduates.



## **Shapiro Center for Writing**

116 Mt. Vernon Street, Middletown, CT 06459  
860-685-3988.

The Shapiro Center serves as a hub for writing activities and provides a venue for readings, workshops, colloquia, informal discussions, student-sponsored events, and receptions. Its lounge is open to all students enrolled in creative writing courses.



### Wesleyan Resource Center

167 High Street, Middletown, CT 06459  
(860) 685-3979

The Resource Center, a culmination of student advocacy and activism, provides a centralized space where students can learn about and advocate for diversity and inclusion at Wesleyan as well as in their own lives. The Center will engage and support students, faculty, and staff who are interested in social justice programming, advocacy, and education, serving as a resource and providing a safe environment for underrepresented students and allies to discuss, learn, organize, and lead.



### Center for the Arts (CFA)

283 Washington Terrace, Middletown, CT 06459  
860-685-3355

The CFA housed in an eleven-building complex designed by Kevin Roche/John Dinkeloo Architects, opened in the fall of 1973. By juxtaposing several highly flexible buildings, the architecture preserves the individual integrity of each of the arts while at the same time encouraging creative interaction between them. Performance and exhibition spaces include [Crowell Concert Hall](#), [World Music Hall](#), CFA Hall, CFA Theater, [Davison Art Center](#), and the [Ezra and Cecile Zilkha Gallery](#).



### Center for Film Studies

Goldsmith Family Cinema, Center for Film Studies  
301 Washington Terrace, Middletown, CT 06459  
(860) 685-3542

The Film Series has presented student-programmed, student-staffed movie screening for over 40 years. Currently it runs on Wednesday through Saturday nights during the semester, and aims to show a wide and varied selection of works from throughout cinema history: old and new, foreign and domestic, narrative and documentary, and all sorts of others.



### Office of Graduate Student Services (OGSS)

Exley Science Center, Room 128-132  
265 Church Street, Middletown, CT 06459  
860-685-2390  
Office Hours are Monday - Friday, 8:00am-4:30pm.

Graduate Studies constitutes an essential element of Wesleyan, an independent university of the liberal arts and sciences founded in 1831. Wesleyan offers Graduate Studies programs leading to the Master of Arts and Doctor of Philosophy degrees. There are approximately 200 graduate students in Graduate Studies programs.

# W CAMPUS RESOURCES (continue)



## [Van Vleck Observatory](#)

96 Foss Hill Drive, Middletown, CT 06459  
(860) 685-2130

Van Vleck Observatory has three onsite telescopes housed in domes as well as portable 10 inch Meade Schmidt-Cassegrain donated by the Fiducia family of Middletown and several smaller portable telescopes.

Weather-permitting, weekly public observing at Van Vleck Observatory is held on Wednesday evenings (8-9 PM) during the normal academic semester. Wednesday night observing will not be scheduled during any University holidays or during final exams.



## [Davison Health Center](#)

327 High Street, Middletown, CT 06459  
860-685-2910

The Davison Health Center's mission is to provide high quality healthcare and health promotion to improve students' overall health, to support their educational goals, and to develop skills for long-term healthy lifestyles. Their vision is to meet the health, education and wellness promotion needs of students and members of the campus community in an up-to-date facility through high quality, relevant, efficient and competitively priced services and programs. A diverse team of professionals who believe that "health" involves every aspect of well-being: emotional, nutritional, sexual, spiritual and physical provides comprehensive primary care for illness and injury.



## [Romance Languages and Literatures \(RLL\)](#)

300 High Street, Middletown, CT 06459  
(860) 685-2830

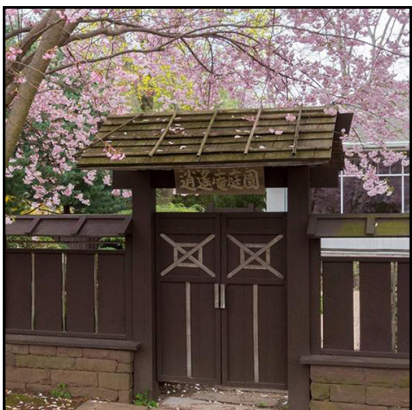
The Department of Romance Languages and Literatures (RL&L) is a cornerstone of the Humanities at Wesleyan and houses 4 language departments:

[\\*Spanish](#)

[\\*French](#)

[\\*Italian](#)

[\\*Portuguese](#)



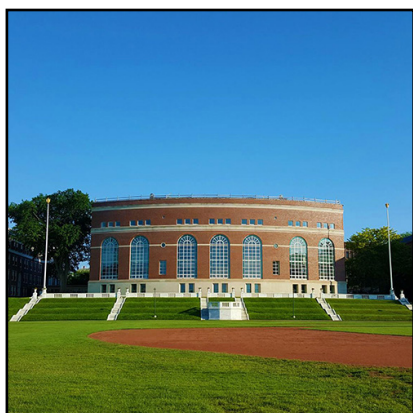
## [College of East Asian Studies \(CEAS\)](#)

343 Washington Terrace, Middletown, CT 06459  
(869) 685-2330

The College of East Asian Studies' goal is to cultivate students with a deep and broad knowledge about East Asia and promote an understanding of East Asia on the Wesleyan campus, within the Middletown community and beyond. We offer language training in Chinese, Japanese, and Korean as well as a broad range of interdisciplinary courses that are grouped in five concentrations.

They also offer regular programming about East Asia for the Wesleyan community, including regular and special lectures and events and gallery exhibits and talks. The Center also houses our gallery, Japanese garden, tatami tea room, our collections, as well as classrooms and faculty offices.

# W CAMPUS RESOURCES (continue)

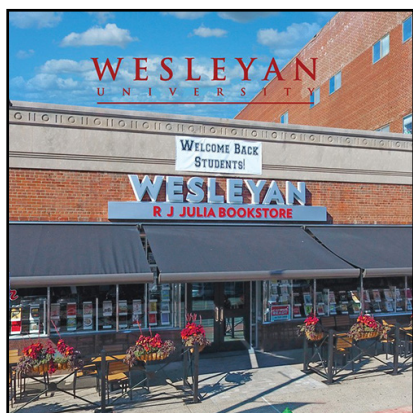


## Olin Library

252 Church Street, Middletown, CT 06459  
(869) 685-2660

Your Wesleyan ID card is also your library card. All students and permanent staff have access to these services:

- Borrow from the Wesleyan libraries (review our loan periods)
- Borrow from Connecticut College and Trinity College libraries (CTW)
- Borrow from other libraries through InterLibrary Loan
- Using our online research materials on-campus or off-campus
- Research help via consultations or appointments with any of our librarians
- Suggest a purchase for the library collection



## Wesleyan R.J. Julia Bookstore

413 Main Street, Middletown, CT 06457  
(860) 685-3939

### HOURS

Monday - Saturday: 9:00 am - 9:00 pm

Sunday: 9:00 am - 6:00 pm

The Wesleyan RJ Julia Bookstore houses approximately 18,000 books with a special section highlighting authors from the Wesleyan community. In addition to books, the store sells a wide range of both Wesleyan-themed and general apparel and merchandise. There is also a cafe restaurant located inside the bookstore.



## Freeman Athletic Center

161 Cross Street, Middletown, CT 06459  
(860) 685-3555 (Office)

The Freeman Athletic Center includes a 60,000-square-foot Bacon Fieldhouse, the Wesleyan Natatorium, the Wesleyan Areana and numerous support areas such as a locker and team rooms, equipment rooms, athletic injury care room, fitness center and multi-purpose room. It also is surrounded by a number of outdoor playing facilities, including the Andersen Track.

Your Wesleyan ID card is required and must be presented upon entry. There is no membership fee for Wesleyan faculty and staff. Facility hours often vary. For the most up-to-date information, please review their website at: <http://athletics.wesleyan.edu/facilities/hours>

## Office of Residential Life

North College - Lower Level  
237 High Street, Middletown, CT 06459  
(860) 685-3550

The Office of Residential Life strives to provide a safe, supportive and inclusive residential environment which complements and extends the educational experience of students.





# W PLACES TO EAT ON-CAMPUS



## Usdan Marketplace

Located on the second floor of The Usdan University Center is an all you can eat dining hall. Middletown Cash, credit card, and cash accepted.

### HOURS:

Monday – Friday

Breakfast 8:00 am – 10:30 am

Lunch 11:00 am – 3:00 pm

Dinner 5:00 pm – 8:00 pm

Late Night 9:30 pm – 1:00 am

Saturday – Sunday

Brunch 11:00 am – 2:00 pm

Dinner 5:00 pm – 8:00 pm

## Usdan Café

This a la carte café features a variety of grab-and-go salads, sandwiches, coffees, and specialty beverages. Middletown Cash, credit card, and cash accepted.

### HOURS:

Monday – Friday 8:00 am – 8:00 pm

Saturday – Sunday 10:00 am – 8:00 pm

## Pi Café

Located in the Exley Science Center lobby and features Pierce Brothers Coffee and other specialty drinks. Middletown Cash, credit card, and cash accepted.

### HOURS:

Monday – Thursday 8:00 am – 9:00 pm

Friday 8:00 am – 5:00 pm

Saturday – Sunday 1:00 pm – 6:00 pm

## Daniel Family Commons (DFC)

The Daniel Family Commons (DFC), located on the third floor of the Usdan University Center. This space is primarily a faculty/staff dining space. Students are encouraged to join faculty and staff mentors to engage in intellectual discourse over lunch. Middletown Cash, credit cards, and cash accepted. Lunch cost: \$8.25.

### HOURS:

Monday – Friday 11:30 am – 1:30 pm

## Summerfields

Located in Butterfield C Residence. Middletown Cash, credit card, and cash accepted.

### HOURS:

Monday – Friday

Lunch 11:00 am – 2:00 pm

Dinner 5:30 pm – 9:00 pm

Saturday – Sunday

Dinner 5:30 pm – 9:00 pm

## Weshop Essentials

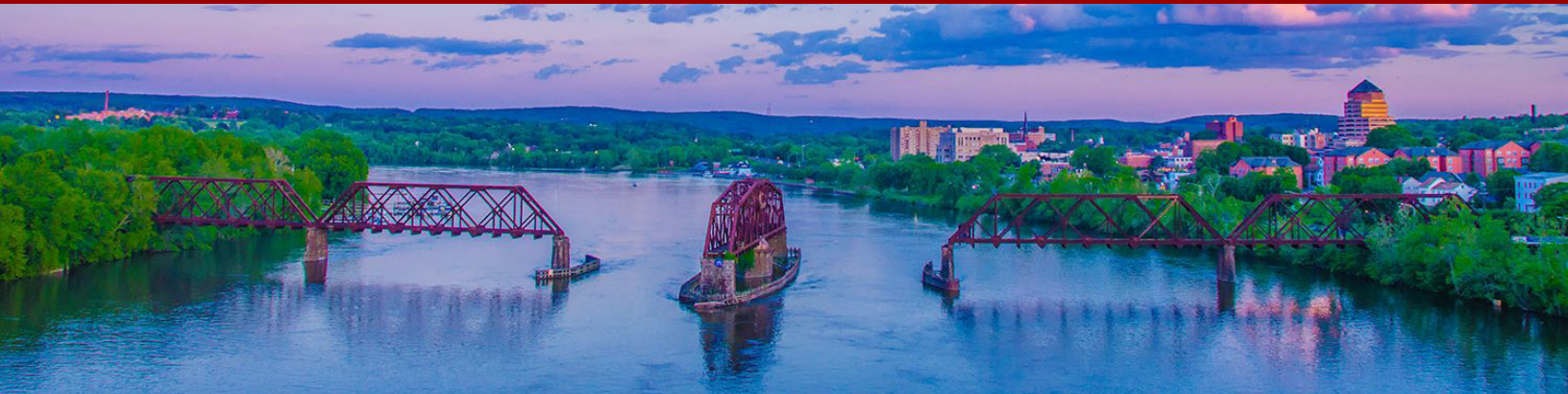
Wesleyan's own mini-market provides a large inventory of premier national, regional, and local brands, ready-to-eat and ready-to-heat organic and Kosher selections, bulk food items such as nuts, grains, legumes, coffee, rice, flour, and more. Points, Middletown Cash, credit card, and cash accepted.

### Hours:

Sunday – Thursday 12:00 pm – 12:00 am

Friday – Saturday 2:00 pm – 6:00 pm

# W PLACES TO DINE OFF-CAMPUS



## Guide to Downtown Middletown

*\*Indicates walking distance*

### AMERICAN CUISINE

\$ Eli Cannon's Tap Room*	695 Main Street, (860) 347-3547
\$ Ford News Diner*	358 Main Street, (860) 346-4655
\$ The Green Room*	124 College Street, (860) 704-6999
\$\$ Hair of the Dog Saloon	544 South Main Street, (860) 346-2400
\$\$ Mattabesett Canoe Club*	80 Harbor Drive, (860) 347-9999
\$\$ It's Only Natural*	606 Main Street, (860) 346-9210
\$\$ Mezzo Grille*	106 Court Street, (860) 346-6000
\$\$ Mondo Pizza*	10 Main Street, (860) 343-3330
\$ O'Rourke's Diner*	728 Main Street, (860) 346-6101
\$\$\$ Tavern at the Armory <i>at the Inn at Middletown</i> *	70 Main Street, (860) 854-6323

### CHINESE CUISINE

\$\$ China King*	200 Main St. Suite #1, (860) 344-9455
\$\$ First Wok*	560 Main Street, (860) 343-1604
\$\$\$ Forbidden City*	335 Main Street, (860) 343-8288
\$\$ Fortune Garden	340 East Main Street, (860) 343-0927
\$\$ Fortune Wok	844 Washington Street, (860) 347-0885

### ITALIAN CUISINE

\$\$ Amici Italian Grill*	280 Main Street, (860) 346-0075
\$\$\$ Esca*	437 Main Street, (860) 316-2552
\$\$ Fiore II*	332 Main Street, (860) 344-5557
\$\$ First and Last Tavern*	220 Main Street, (860) 347-2220
\$ Illiano's	404 South Main Street, (860) 346-5656
\$ Jerry's Pizza	635 South Main Street, (860) 346-5335
\$\$\$ La Cantina Café Ristorante*	74 Court Street, (860) 704-0000
\$\$ Luce Restaurant*	98 Washington Street, (860) 344-0222

### JAPANESE CUISINE

\$ Fujiya Ramen*	423B Main Street, (860) 852-5695
\$\$ Japanaica,	854 Washington Street, (860) 346-4498
\$\$ Mikado*	3 Melilli Plaza, (860) 346-6655
\$\$Hachi*	320 Main Street, (860) 346-0727
\$\$ Moonlight Sushi*	130 Main Street, (860) 788-6253

### MEXICAN CUISINE

\$\$ La Boca Restaurant and Cantina*	337 Main Street, (860) 347-4777
\$\$ Puerto Vallarta*	206 Main St., Metro Square, (860) 852-0080

### SOUTH ASIAN CUISINE

\$\$ Haveli India	1300 South Main Street, (860) 347-7773
\$\$ Tandoor*	170 Main Street, (860) 346-6600
\$\$ Tibetan Kitchen Restaurant*	574 Main Street, (860) 854-6292
\$ Udipi Bhavan	749 Saybrook Road, (860) 346-3355

### SOUTHEAST ASIAN CUISINE

\$\$ Lan Chi's*	505 Main Street, (860) 347-8885
\$ Pho 170*	170 Main Street, (860) 788-6341
\$\$ Thai Gardens*	300 Main Street, (860) 346-3322
\$\$ Typhoon*	360 Main Street, (860) 344-9667

### CAFÉ / BAKERY/ DELI

\$ BrewBakers*	169 Main Street, (860) 852-0034
\$ Café 56*	102 Court Street, (860) 346-6633
\$ Fusion Bakery and Patisserie*	100 Riverview Center, (860) 344-9024
\$ Klekolo World Coffee*	181 Court Street, (860) 343-9444
\$ Neon Deli and Market*	130 Cross Street, (860) 347-1800
\$\$ New England Emporium*	386 Main Street, (860) 346-1200
\$ Pickle Stand Delicatessen and Tavern*	195 Main Street, (860) 788-3570
\$ Sweet Harmony Café and Bakery*	330 Main Street, (860) 344-9646

CHECK OUT MORE HERE:

<http://www.wesleyan.edu/about/visitors/restaurants.html>

## SHORT DISTANCE TRAVEL

### [New Haven Train Station Shuttle](#)

The New Haven Shuttle operates every **Thursday, Friday, Saturday** and **Sunday**. Shuttle reservations need to be made in advance. The deadline to make reservations is Thursday at 4pm for the Thursday Shuttle, Friday at 4pm for the Friday and Saturday Shuttle and Saturday at 4pm for the Sunday Shuttle. Reservations need to be made at the Usdan University Center Box Office or by calling Usdan Box Office at 860-685-3355.

The fee is **\$10.00 per person one way** except for student-breaks when the fee is \$15.00. The University Box Office accepts Cash, Check, student account number and Credit Cards. For schedule and ticket purchase, visit the [New Haven Train Station Shuttle](#).



### [The Ride: Campus Shuttle](#)

Catch the RIDE at locations throughout campus and make the trek across campus both quick and safe.

HOURS *(during academic year)*

Sunday - Thursday 7 PM - 3 AM  
Friday - Saturday 7 PM - 4 AM

To better serve the community we have redesigned our route for maximum efficiency. Two shuttle vans make stops within 15 minutes of each other minimizing delays.

The RIDE is **free** to all members of the Wesleyan Community. Catch the RIDE tonight and every night!

**CATCH A RIDE: 860-685-3788**

### [Middletown Area Transit \(MAT\)](#)

Public transit service in Middletown



### [WesRides](#)

Ridesharing is created by students for students at Wesleyan University. Join this [Facebook Group!](#)

Need a ride? Be sure to include:

- when you need a ride
- where you're starting out
- where you need to arrive
- how many seats you need
- how much baggage you have

WesRides: because Cardinals support each other.™



### [ZipCar: Car Sharing Company](#)

Wesleyan has partnered with Zipcar to bring self-service, on-demand car sharing to campus. To use Zipcars, simply register as a member, reserve a car online or by phone, use your Zipcard to enter the car, and drive away. When you're done, return the car to the same location where you picked it up. Requires a driver's license. As a member you get:

- Access to Zipcars 24/7 at Parking Lot C and Parking Lot E on campus (look for the Zipcar signs).
- Discounted hourly rates for faculty, staff and students age 18 and older: rates start at just \$7.50/hour or \$69/day.
- Gas, insurance and maintenance are included for free!
- Join for only \$25 a year, and receive \$35 in driving credit your first month.



### [Enterprise Rent-A-Car](#)

Need to rent a car? Use the Wesleyan discount code to get 10% off. NOTE: there is a \$250 security deposit. Requires a driver's license and car insurance (or pay extra for car insurance). Only takes credit card.

Discount Code: XZ48458

## LONG DISTANCE TRAVEL



### TRAVEL BY TRAIN



#### Metro-North

Connects from Grand Central Station in New York City to New Haven Union Station, CT. Download [TrainTime](#) app on your phone.

\$17.75 one-way (non-peak)

\$23.50 one-way (peak)



#### Amtrak

Arrives and departs from Meriden train station (7 miles from campus). You can take the Amtrak south towards New York or North towards Boston.

Prices vary. [Book tickets online](#). Download [Amtrak app](#) on your phone.

#### Connect-Middletown

M-Link service is a route serviced by Middletown Area Transit (MAT). This proposal strives to enhance Middletown's connection to the wider region by keeping local *M-Link* service in place and launching **M-Link Express**, a modified route that will provide a faster ride to **Meriden Rail Station**, where in May 2018, a new commuter rail service, **CTRail Hartford Line**, will pass through going between New Haven, CT, Hartford, CT, and Springfield, MA.



### TRAVEL BY AIR



#### Bradley International Airport (BDL)

Located in Windsor Locks, Connecticut (~40 minutes from campus)

#### Newark Liberty International Airport (EWR)

Located in Newark, New Jersey (~2 hours from campus)

#### LaGuardia Airport (LGA)

Located in Queens, New York (~2 hours from campus)

#### John F. Kennedy International Airport (JFK)

Located in Queens, New York (~2 hours from campus)

#### Boston Logan International Airport (BOS)

Located in Boston, Massachusetts (~2.5 hours from campus)

#### T.F. Green Airport (PVD)

Located in Warwick, Rhode Island (~1.5 hours from campus)



Many students use apps such as **Uber** and **Lyft** to get around. Prices vary depending on destination.

#### **Example**

~\$40 from campus to New Haven Union Station

~\$50 from campus to BDL airport

## Banking

When you arrive at Wesleyan, you may find the need for a banking institution. Below are some banking institutions located in Middletown. Visit their locations and or websites to determine which would be best for you.



**Bank of America**  
267 Main St  
Middletown, CT 06457 US  
(860) 343-5541

**HOURS:**  
Monday - Friday: 9:00 am - 4:00 pm  
Saturday - Sunday: Closed

ATM Open 24 hours



**Citizens Bank**  
834 Washington St  
Middletown, CT 06457  
(860) 638-4414

**HOURS:**  
Monday-Wednesday: 9:00 am - 4:00 pm  
Thursday-Friday: 9:00 am - 5:00 pm  
Saturday: 9:00 am - 12:00 pm  
Sunday: Closed



**Wells Fargo Bank**  
111 Washington Street  
Middletown, CT 06457  
860-347-0567

**HOURS:**  
Monday - Friday 9:00 am - 5:00 pm  
Saturday: 9:00 am - 12:00 pm  
Sunday: Closed

ATM Open 24 hours

## Cellular Phones

You may find the need for a cellular phone company during your year in the United States. Below are some cellphone companies located in Middletown. Visit their locations and or websites to determine which would be best for you.



**AT&T Store**  
105 Main Street  
Middletown, CT 06457  
(860) 344-5880

**HOURS:**  
Monday – Saturday 10 AM – 7 PM  
Sunday 11 AM – 5 PM



**Boost Mobile**  
534 Main Street  
Middletown, CT 06457  
(860) 358-9039

**HOURS**  
Monday – Friday 10 AM – 7 PM  
Saturday 11 AM – 6 PM  
Sunday Closed



**Cricket Wireless**  
442 Main Street  
Middletown, CT 06457  
(860) 788-3381

**HOURS:**  
Monday – Saturday 10 AM – 8 PM  
Sunday 12 PM – 5 PM



**Sprint Store**  
551 Washington Street  
Middletown, CT 06457  
(860) 638-4765  
dealer.sprint.com

**Hours:**  
Monday – Saturday 10 AM – 8 PM  
Sunday 11 AM – 6 PM



**T-Mobile**  
170 Main Street  
Middletown, CT 06457  
(860) 344-8219

**Hours:**  
Monday – Saturday 10 AM – 7 PM  
Sunday 12 PM – 6 PM



## Grocery Shopping



**Aldi**  
671 Washington Street  
Middletown, CT 06457  
(855) 955-2534  
HOURS:  
Monday-Saturday 9 AM - 8 PM  
Sunday 10 AM - 6 PM



**Stop & Shop**  
416 E. Main Street  
Middletown, CT 06457  
(860) 346-0160  
HOURS:  
Monday – Saturday 6 AM – 12 AM  
Sunday 7 AM – 12 AM



**Price Chopper**  
855 Washington Street  
Middletown, CT 06457  
(860) 740-7700  
Open 24 Hours



**It's Only Natural (ION)**  
575 Main Street  
Middletown, CT 06457  
(860) 346-1786  
HOURS:  
Tuesday - Sunday 11 AM - 9 PM  
Monday Closed

---

## Health and Pharmacy



**Walgreens**  
633 Washington Street  
Middletown, CT 06457  
(860) 346-7628  
HOURS:  
Monday – Friday 7 AM – 10 PM  
Saturday – Sunday 8 AM – 10 PM

**Walgreens**  
311 E. Main Street  
Middletown, CT 06457  
(860) 704-0135  
Open 8 AM – 10 PM everyday



**Rite Aid**  
10a Main Street  
Middletown, CT 06457  
(860) 346-8601  
HOURS:  
Open 7 AM – 9 PM everyday



**CVS**  
675 Washington Street  
Middletown, CT 06457  
(860) 344-1320  
Open 8 AM – 10 PM everyday

**CVS**  
308 Main Street Extension  
Middletown, CT 06457  
(860) 344-1857  
Open 24 hours



**Middlesex Hospital**  
28 Crescent Street  
Middletown, CT 06457  
(860) 358-6000  
Open 24 hours

## Local Services



### Social Security Office

425 Main Street  
Middletown, CT 06457  
(877) 692-3145

#### HOURS:

Monday – Friday 9 AM – 4PM  
Weekend Closed



### United States Postal Service (USPS)

11 Silver Street  
Middletown, CT 06457  
(800) 275-8777

#### HOURS:

Monday – Friday 8:30 AM – 5 PM  
Saturday 9 AM – 1 PM  
Sunday Closed



### Middletown Adult Education

398 Main Street  
Middletown, CT 06457  
(860) 343-6044

Offers a wide range of support for adult education such as English language education, citizenship support, and more.

## Shopping and Shipping



### Amazon Locker - Helix

35 Foss Hill, at Wesleyan University  
Middletown, CT 06457

Open 24 hours

Amazon Locker provides you with a self-service delivery location to pick up and return your Amazon.com packages.

Instead of delivering a package to your home or business address, you can select an Amazon Locker location and pick up your package at a time that's convenient for you. Once your package is delivered to the Amazon Locker, you'll receive an e-mail notification with a unique pickup code that includes the address and opening times for your selected Locker location.

When you arrive to collect your package, enter your pickup code or scan the barcode using the barcode scanner and follow the instructions on the screen.

All packages delivered to Amazon Locker locations must be picked up within three days. If you're not able to collect your package within this timeframe, the package will be returned to us for a refund.

*Note: Once you have selected an Amazon Locker location for delivery, you'll have an opportunity to request a lower Locker slot (between 15" and 48" from the ground) during checkout.*

# W MIDDLETOWN FUN ACTIVITIES

Middletown and nearby communities are rich in cultural and natural resources. Downtown Middletown, just three blocks from campus, boasts a diverse collection of restaurants ranging from Italian, Mexican and Japanese to Thai, Indian, Caribbean, Tibetan and vegetarian—as well as a nationally famous diner. Here’s a comprehensive list of [things to do in Middletown](#).



## Metro Movies

Metro Square Shopping Center  
140 Main Street  
Middletown, CT 06457  
(860) 346-4000

## Regular Admission

*\*Suggestion: Bring Wesleyan ID to get Student Discount\**

Monday – Thursday (Weekday)

Shows before noon: \$5

Shows before 4 PM: \$8.50

Shows after 4 PM: \$10.25

Friday – Sunday (Weekend)

Shows before 4 PM: \$8.50

Shows after 4 PM: \$10.25

## Special Admission

BARGAIN TUESDAYS

\$5.00 Tuesday

Every Movie, All Day Long

\*Restrictions Apply

\$2.75 extra for 3D Movies

\$6 AFTER 6 SUNDAYS

Sundays: \$6.00

All Movies after 6pm

\*Restrictions Apply

\$2.75 extra for 3D Movies



## Middletown Roller Skating Rink

547 Main Street  
Middletown, CT 06457  
(860) 704-0064

Middletown Roller Skating Rink is an indoor rink and open year round.

ADMISSION: \$8

Rental skates or roller blades: \$3

HOURS:

Monday – Thursday 6 PM - 9 PM

Friday 6 PM - 10 PM

Saturday 1-3 PM; 6-10 PM

Sunday 2 PM - 6 PM



## The Board Room

514 Main Street  
Middletown, CT 06547  
(860) 788-7824

Welcome to Connecticut’s first board game café! The Board Room has hundreds of new and classic board games in the store, a cafe with tasty snacks made to order, PLUS a few of our favorite games for sale.

ADMISSION: \$5 per person-good from open to close each day.

HOURS

Tuesday-Friday: 3 PM to 11 PM

Saturday: noon to midnight

Sunday: noon to 8 PM



## Kidcity Children’s Museum

119 Washington Street  
Middletown, CT 06457  
(860) 347-0495

Kidcity is a children’s museum with three floors of imagination play, where kids ages 1 to 7 play pretend with their favorite grown-ups. The exhibits are handmade and one-of-a-kind, built by in-house artists who love inspiring playfulness in visitors of all ages.

ADMISSION:

Adults & Children: \$10

Babies under 1 year: Free

HOURS:

Sunday – Tuesday 11 AM – 5 PM

Wed. –Saturday 9 AM – 5 PM



# W MIDDLETOWN FUN ACTIVITIES (continue)



## The Adventure Room

282 Main Street Extension  
Historic Sanseer Mill  
Middletown, CT 06457  
860-358-9130

Adventure Rooms offers various interactive group entertainment experiences. Your team will explore unique environments, find interesting objects, and use clues to solve a series of puzzles in an attempt to reach the ultimate objective.

A **reservation is required** and its suggested you make it in advance. Events fill up quickly! In order to create the reservation, you will need to leave a 50% deposit. Reservations can be made online or by phone.

### ADMISSION:

\$30/ person for 2-9 players  
\$27/ person for 10+ players



## Brownstone Adventure Park

161 Brownstone Ave,  
Portland, CT 06480  
(860) 860-0208

• Rock Climbing • Zip Lines • Wakeboarding • Cliff Jumping • Scuba Diving • Snorkeling • Kayaking • 'Survivor-style' Obstacle Courses • Giant Inflatable Water Toys including a Iceberg, blob and Trampoline • Swimming

### ADMISSION:

General Swimming Daily Pass \$26

*(includes swimming, hiking, biking, kayak rental)*

Adventure Sports Daily Pass \$36

*(includes all of above + cliff jumping, rock climbing, ziplines, waterslides, rope swing, scuba diving, inflatable objects)*

### HOURS:

Open weekly from 10 AM – 7 PM

Summer: June 16 – September 10th

## Explore Nearby



### Arrigoni Bridge

30 min. walk from campus



### Harbor Park

15 min. walk from campus



### Wadsworth Falls

45 min. walk from campus



### Wadsworth Mansion

40 min. walk from campus