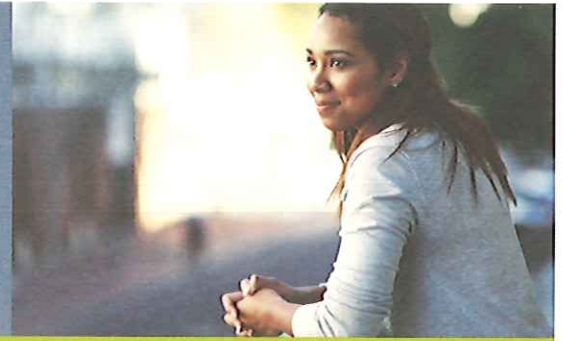


## Help, when you need it most

With your Employee Assistance Program and Work/Life Balance services, confidential assistance is as close as your phone or computer.



### Always by your side

- Expert support 24/7
- Convenient website
- Short-term help
- Referrals for additional care
- Monthly webinars
- Medical Bill Saver™  
— helps you save on medical bills



### Who is covered?

Unum's EAP services are available to all eligible employees, their spouses or domestic partners, dependent children, parents and parents-in-law.



### Employee Assistance Program — Work/Life Balance

Toll-free 24/7 access:

- 1-800-854-1446  
(multi-lingual)
- [www.unum.com/lifebalance](http://www.unum.com/lifebalance)



*Turn to us, when you don't know where to turn.*

### Employee Assistance Program (EAP)

Your EAP is designed to help you lead a happier and more productive life at home and at work. Call for confidential access to a Licensed Professional Counselor\* who can help you.

#### A Licensed Professional Counselor can help you with:

- Stress, depression, anxiety
- Family and parenting problems
- Relationship issues, divorce
- Anger, grief and loss
- Job stress, work conflicts
- And more

### Work/Life Balance

You can also reach out to a specialist for help with balancing work and life issues. Just call and one of our Work/Life Specialists can answer your questions and help you find resources in your community.

#### Ask our Work/Life Specialists about:

- Child care
- Financial services, debt management, credit report issues
- Elder care
- Even reducing your medical/dental bills!
- Legal questions
- And more
- Identity theft

### Help is easy to access:

- **Online/phone support:** Unlimited, confidential, 24/7.
- **In-person:** You can get up to 3 visits available at no additional cost to you with a Licensed Professional Counselor. Your counselor may refer you to resources in your community for ongoing support.

\* The counselors must abide by federal regulations regarding duty to warn of harm to self or others. In these instances, the consultant may be mandated to report a situation to the appropriate authority.

Unum's Employee Assistance Program and Work/Life Balance services, provided by HealthAdvocate, are available with select Unum insurance offerings. Terms and availability of service are subject to change. Service provider does not provide legal advice; please consult

your attorney for guidance. Services are not valid after coverage terminates. Please contact your Unum representative for details.

Insurance products are underwritten by the subsidiaries of Unum Group.

[unum.com](http://unum.com)

© 2018 Unum Group. All rights reserved. Unum is a registered trademark and marketing brand of Unum Group and its insuring subsidiaries.