

The Goodspeed Musicals production of

Billy Elliot

the musical

Book and Lyrics by Lee Hall
Music by Elton John
Originally directed by Stephen Daldry

THEATER

A PASSION FOR DANCE: Goodspeed Opera House's *Billy Elliot*

It's off to Haddam for a hands-on visit to Goodspeed's famous costume warehouse, learning how character, plot, and presentation coalesce in the choice of wardrobe. Then on to a backstage prop workshop to experience how these devices—seemingly so incidental to the action—are handled. A box lunch beside the Connecticut River follows, then a performance of *Billy Elliot* (music by Elton John) and a "Talk Back" session with actors to complete a busy day.

FULL-DAY PROGRAM: SATURDAY, OCTOBER 19



ARCHITECTURE

RAISING THE ROOF: 1950s Architecture and the Postwar Housing Boom

Affordable postwar housing design posed a particular challenge for architects in the 1950s. Were their efforts successes or failures? How are we using these designs today? This course examines the work of Frank Lloyd Wright, Thomas Edison, Marcel Breuer, Buckminster Fuller, William Levitt, and others, to examine what this history tells us about life in America today and in the future.

LITERATURE

READ ALL ABOUT IT! Books that Changed the Course of History

Machiavelli's *The Prince*. Karl Marx's *The Communist Manifesto*. John Stuart Mill's *On Liberty*. Martin Luther King Jr.'s *Why We Can't Wait*. Betty Friedan's *The Feminine Mystique*. Consider how these great works truly changed the trajectory of human history. In analyzing all the facets of each book's arguments, we will examine why they—in their time and place—so appealed to the human imagination and what made them among the most influential political treatises ever written.

FOOD & DRINK

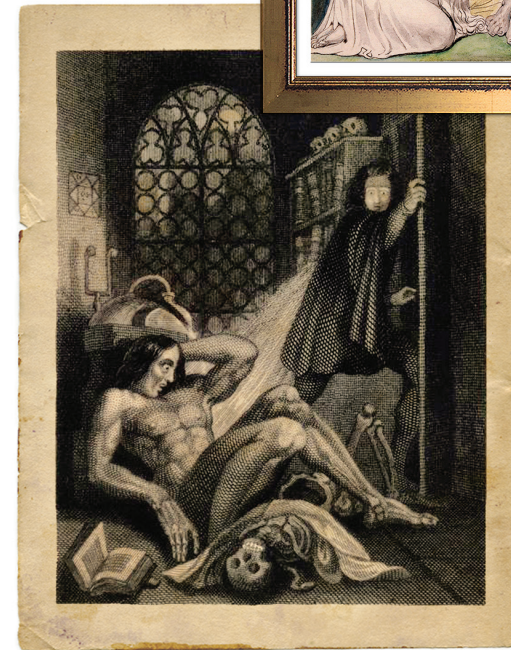
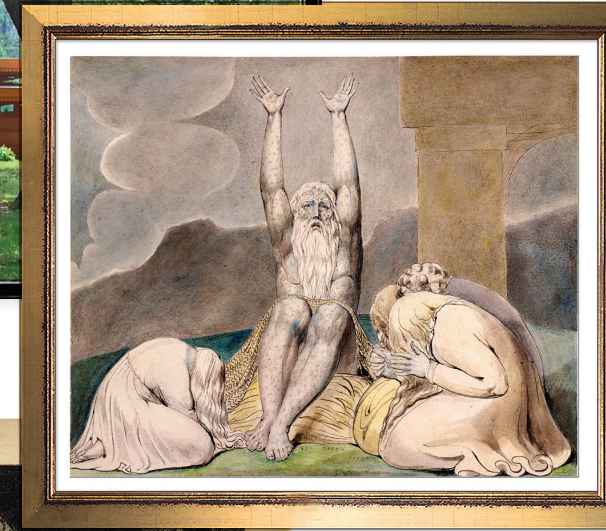
OVER A BARREL: The World of Liquid Spirits

Step up to the bar for a fun time learning about the ever-evolving topic of white and brown alcoholic beverages! We will delve into the history of each major category, from vodka, tequila, rum, and gin to scotch, cognac, bourbon, and other whiskies. Learn about production techniques and distinctive taste differences between distilled beverages from all over the world.

DRAMA

"NO CONFLICT, NO DRAMA": Shaw's Way with a Play

Youth's persistent quest to create a better, changed world is put to the test in three plays by George Bernard Shaw. In *Major Barbara*, *Heartbreak House*, and the eponymous *Saint Joan*, we see how his heroines fail or succeed in transforming a society arrayed against them, revealing Shaw's gift for storytelling and emotional engagement.



LITERATURE

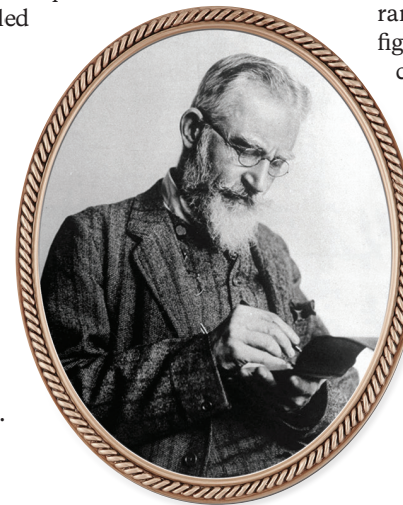
THE BOOK OF JOB: Exploring the Human Condition through the Eyes of the Divine

With images by 19th-century artist William Blake as a foundation, this course explores the biblical narrative of the Book of Job, examining his failings, temptations, and the wider range of human emotions not typically associated with religious figures, as a way of better understanding our own place in the community of humankind.

LITERATURE

DARK AND STORMY NIGHTS: Monsters and Machines in Modernist Art and Literature

From the literature of the late 18th to early 19th century emerged the Gothic novel genre. In response to the Enlightenment's focus on science and reason, writers looked back to a time when inexplicable forces of good, evil, and the supernatural prevailed. Works by Milton, Shelley, Stoker, Poe, Wells, and others are considered, along with period art and film.



The Wesleyan Institute for Lifelong Learning offers noncredit nondegree classes that are informative, affordable, and fun!
SPACE IS LIMITED; REGISTER NOW.

<table border="1"> <tr><th>S</th><th>M</th><th>T</th><th>W</th><th>TH</th><th>F</th><th>S</th></tr> <tr><td>8</td><td>9</td><td>10</td><td>11</td><td>12</td><td>13</td><td>14</td></tr> <tr><td>15</td><td>16</td><td>17</td><td>18</td><td>19</td><td>20</td><td>21</td></tr> <tr><td>22</td><td>23</td><td>24</td><td>25</td><td>26</td><td>27</td><td>28</td></tr> <tr><td>29</td><td>30</td><td>1</td><td>2</td><td>3</td><td>4</td><td>5</td></tr> <tr><td>6</td><td>7</td><td>8</td><td>9</td><td>10</td><td>11</td><td>12</td></tr> </table>	S	M	T	W	TH	F	S	8	9	10	11	12	13	14	15	16	17	18	19	20	21	22	23	24	25	26	27	28	29	30	1	2	3	4	5	6	7	8	9	10	11	12	<p>OVER A BARREL GREG ALTIERI • Wine and spirits wholesaler 6:30-8:30 P.M.</p>	<input type="checkbox"/> @ \$175 = \$
S	M	T	W	TH	F	S																																						
8	9	10	11	12	13	14																																						
15	16	17	18	19	20	21																																						
22	23	24	25	26	27	28																																						
29	30	1	2	3	4	5																																						
6	7	8	9	10	11	12																																						

<table border="1"> <tr><th>S</th><th>M</th><th>T</th><th>W</th><th>TH</th><th>F</th><th>S</th></tr> <tr><td>8</td><td>9</td><td>10</td><td>11</td><td>12</td><td>13</td><td>14</td></tr> <tr><td>15</td><td>16</td><td>17</td><td>18</td><td>19</td><td>20</td><td>21</td></tr> <tr><td>22</td><td>23</td><td>24</td><td>25</td><td>26</td><td>27</td><td>28</td></tr> <tr><td>29</td><td>30</td><td>1</td><td>2</td><td>3</td><td>4</td><td>5</td></tr> </table>	S	M	T	W	TH	F	S	8	9	10	11	12	13	14	15	16	17	18	19	20	21	22	23	24	25	26	27	28	29	30	1	2	3	4	5	<p>RAISING THE ROOF RICHARD VOIGT • Attorney, Instructor 6:30-8:30 P.M.</p>	<input type="checkbox"/> @ \$140 = \$
S	M	T	W	TH	F	S																															
8	9	10	11	12	13	14																															
15	16	17	18	19	20	21																															
22	23	24	25	26	27	28																															
29	30	1	2	3	4	5																															

<table border="1"> <tr><th>S</th><th>M</th><th>T</th><th>W</th><th>TH</th><th>F</th><th>S</th></tr> <tr><td>8</td><td>9</td><td>10</td><td>11</td><td>12</td><td>13</td><td>14</td></tr> <tr><td>15</td><td>16</td><td>17</td><td>18</td><td>19</td><td>20</td><td>21</td></tr> <tr><td>22</td><td>23</td><td>24</td><td>25</td><td>26</td><td>27</td><td>28</td></tr> <tr><td>29</td><td>30</td><td>1</td><td>2</td><td>3</td><td>4</td><td>5</td></tr> <tr><td>6</td><td>7</td><td>8</td><td>9</td><td>10</td><td>11</td><td>12</td></tr> <tr><td>13</td><td>14</td><td>15</td><td>16</td><td>17</td><td>18</td><td>19</td></tr> </table>	S	M	T	W	TH	F	S	8	9	10	11	12	13	14	15	16	17	18	19	20	21	22	23	24	25	26	27	28	29	30	1	2	3	4	5	6	7	8	9	10	11	12	13	14	15	16	17	18	19	<p>DARK & STORMY NIGHTS RICHARD FRISWELL • Associate Director, WILL program, Wesleyan 6:30-8:30 P.M.</p>	<input type="checkbox"/> @ \$175 = \$
S	M	T	W	TH	F	S																																													
8	9	10	11	12	13	14																																													
15	16	17	18	19	20	21																																													
22	23	24	25	26	27	28																																													
29	30	1	2	3	4	5																																													
6	7	8	9	10	11	12																																													
13	14	15	16	17	18	19																																													

TWO-PART PROGRAM ■ *DOUBLE REGISTRATION IS ENCOURAGED, with a discount on both courses*

<table border="1"> <tr><th>S</th><th>M</th><th>T</th><th>W</th><th>TH</th><th>F</th><th>S</th></tr> <tr><td>8</td><td>9</td><td>10</td><td>11</td><td>12</td><td>13</td><td>14</td></tr> <tr><td>15</td><td>16</td><td>17</td><td>18</td><td>19</td><td>20</td><td>21</td></tr> <tr><td>22</td><td>23</td><td>24</td><td>25</td><td>26</td><td>27</td><td>28</td></tr> <tr><td>29</td><td>30</td><td>1</td><td>2</td><td>3</td><td>4</td><td>5</td></tr> <tr><td>6</td><td>7</td><td>8</td><td>9</td><td>10</td><td>11</td><td>12</td></tr> </table>	S	M	T	W	TH	F	S	8	9	10	11	12	13	14	15	16	17	18	19	20	21	22	23	24	25	26	27	28	29	30	1	2	3	4	5	6	7	8	9	10	11	12	<p>RAPTORS OVERHEAD KEN ELKINS • Education Program Manager, National Audubon Society 6:30-8:00 P.M. FIELD TRIP: October 5</p>	<input type="checkbox"/> RAPTORS @ \$145 = \$ <input type="checkbox"/> DUCKS @ \$145 = \$
S	M	T	W	TH	F	S																																						
8	9	10	11	12	13	14																																						
15	16	17	18	19	20	21																																						
22	23	24	25	26	27	28																																						
29	30	1	2	3	4	5																																						
6	7	8	9	10	11	12																																						

<table border="1"> <tr><th>S</th><th>M</th><th>T</th><th>W</th><th>TH</th><th>F</th><th>S</th></tr> <tr><td>20</td><td>21</td><td>22</td><td>23</td><td>24</td><td>25</td><td>26</td></tr> <tr><td>27</td><td>28</td><td>29</td><td>30</td><td>31</td><td>1</td><td>2</td></tr> <tr><td>3</td><td>4</td><td>5</td><td>6</td><td>7</td><td>8</td><td>9</td></tr> <tr><td>10</td><td>11</td><td>12</td><td>13</td><td>14</td><td>15</td><td>16</td></tr> </table>	S	M	T	W	TH	F	S	20	21	22	23	24	25	26	27	28	29	30	31	1	2	3	4	5	6	7	8	9	10	11	12	13	14	15	16	<p>DUCK! 6:30-8:00 P.M. FIELD TRIP: November 9</p>	<input type="checkbox"/> BOTH COURSES @ \$250 = \$
S	M	T	W	TH	F	S																															
20	21	22	23	24	25	26																															
27	28	29	30	31	1	2																															
3	4	5	6	7	8	9																															
10	11	12	13	14	15	16																															

FULL-DAY PROGRAMS

<table border="1"> <tr><th>S</th><th>M</th><th>T</th><th>W</th><th>TH</th><th>F</th><th>S</th></tr> <tr><td>29</td><td>30</td><td>1</td><td>2</td><td>3</td><td>4</td><td>5</td></tr> </table>	S	M	T	W	TH	F	S	29	30	1	2	3	4	5	<p>CODE OF SILENCE MODERATOR: RICHARD FRISWELL • Associate Director, WILL program, Wesleyan 9:00 A.M.-5:00 P.M.</p>	<input type="checkbox"/> PRE-REGISTRATION: by September 20 @ FREE = \$
S	M	T	W	TH	F	S										
29	30	1	2	3	4	5										

<table border="1"> <tr><th>S</th><th>M</th><th>T</th><th>W</th><th>TH</th><th>F</th><th>S</th></tr> <tr><td>13</td><td>14</td><td>15</td><td>16</td><td>17</td><td>18</td><td>19</td></tr> <tr><td>20</td><td>21</td><td>22</td><td>23</td><td>24</td><td>25</td><td>26</td></tr> <tr><td>27</td><td>28</td><td>29</td><td>30</td><td>31</td><td>1</td><td>2</td></tr> </table>	S	M	T	W	TH	F	S	13	14	15	16	17	18	19	20	21	22	23	24	25	26	27	28	29	30	31	1	2	<p>GOODSPEED'S BILLY ELLIOT MODERATOR: RICHARD FRISWELL • Associate Director, WILL program, Wesleyan 10:30 A.M.-5:00 P.M.</p>	<input type="checkbox"/> Advance registration required @ \$250 = \$
S	M	T	W	TH	F	S																								
13	14	15	16	17	18	19																								
20	21	22	23	24	25	26																								
27	28	29	30	31	1	2																								

<table border="1"> <tr><th>S</th><th>M</th><th>T</th><th>W</th><th>TH</th><th>F</th><th>S</th></tr> <tr><td>6</td><td>7</td><td>8</td><td>9</td><td>10</td><td>11</td><td>12</td></tr> <tr><td>13</td><td>14</td><td>15</td><td>16</td><td>17</td><td>18</td><td>19</td></tr> <tr><td>20</td><td>21</td><td>22</td><td>23</td><td>24</td><td>25</td><td>26</td></tr> <tr><td>27</td><td>28</td><td>29</td><td>30</td><td>31</td><td>1</td><td>2</td></tr> </table>	S	M	T	W	TH	F	S	6	7	8	9	10	11	12	13	14	15	16	17	18	19	20	21	22	23	24	25	26	27	28	29	30	31	1	2	<p>THE PARABLES OF JESUS HOWARD EINSOHN • Adjunct Professor of English, Middlesex Community College 4:30-6:00 P.M. 4:00-6:00 P.M. - October 10</p>	<input type="checkbox"/> @ \$105 = \$
S	M	T	W	TH	F	S																															
6	7	8	9	10	11	12																															
13	14	15	16	17	18	19																															
20	21	22	23	24	25	26																															
27	28	29	30	31	1	2																															

<table border="1"> <tr><th>S</th><th>M</th><th>T</th><th>W</th><th>TH</th><th>F</th><th>S</th></tr> <tr><td>13</td><td>14</td><td>15</td><td>16</td><td>17</td><td>18</td><td>19</td></tr> <tr><td>20</td><td>21</td><td>22</td><td>23</td><td>24</td><td>25</td><td>26</td></tr> <tr><td>27</td><td>28</td><td>29</td><td>30</td><td>31</td><td>1</td><td>2</td></tr> <tr><td>3</td><td>4</td><td>5</td><td>6</td><td>7</td><td>8</td><td>9</td></tr> <tr><td>10</td><td>11</td><td>12</td><td>13</td><td>14</td><td>15</td><td>16</td></tr> <tr><td>17</td><td>18</td><td>19</td><td>20</td><td>21</td><td>22</td><td>23</td></tr> </table>	S	M	T	W	TH	F	S	13	14	15	16	17	18	19	20	21	22	23	24	25	26	27	28	29	30	31	1	2	3	4	5	6	7	8	9	10	11	12	13	14	15	16	17	18	19	20	21	22	23	<p>"NO CONFLICT, NO DRAMA" AL TURCO • Professor Emeritus of English, Wesleyan 5:30-7:00 P.M.</p>	<input type="checkbox"/> @ \$155 = \$
S	M	T	W	TH	F	S																																													
13	14	15	16	17	18	19																																													
20	21	22	23	24	25	26																																													
27	28	29	30	31	1	2																																													
3	4	5	6	7	8	9																																													
10	11	12	13	14	15	16																																													
17	18	19	20	21	22	23																																													

<table border="1"> <tr><th>S</th><th>M</th><th>T</th><th>W</th><th>TH</th><th>F</th><th>S</th></tr> <tr><td>20</td><td>21</td><td>22</td><td>23</td><td>24</td><td>25</td><td>26</td></tr> <tr><td>27</td><td>28</td><td>29</td><td>30</td><td>31</td><td>1</td><td>2</td></tr> <tr><td>3</td><td>4</td><td>5</td><td>6</td><td>7</td><td>8</td><td>9</td></tr> <tr><td>10</td><td>11</td><td>12</td><td>13</td><td>14</td><td>15</td><td>16</td></tr> <tr><td>17</td><td>18</td><td>19</td><td>20</td><td>21</td><td>22</td><td>23</td></tr> </table>	S	M	T	W	TH	F	S	20	21	22	23	24	25	26	27	28	29	30	31	1	2	3	4	5	6	7	8	9	10	11	12	13	14	15	16	17	18	19	20	21	22	23	<p>READ ALL ABOUT IT! GIULIO GALLAROTTI • Professor of Government, Wesleyan 5:30-7:30 P.M.</p>	<input type="checkbox"/> @ \$175 = \$
S	M	T	W	TH	F	S																																						
20	21	22	23	24	25	26																																						
27	28	29	30	31	1	2																																						
3	4	5	6	7	8	9																																						
10	11	12	13	14	15	16																																						
17	18	19	20	21	22	23																																						

<table border="1"> <tr><th>S</th><th>M</th><th>T</th><th>W</th><th>TH</th><th>F</th><th>S</th></tr> <tr><td>10</td><td>11</td><td>12</td><td>13</td><td>14</td><td>15</td><td>16</td></tr> <tr><td>17</td><td>18</td><td>19</td><td>20</td><td>21</td><td>22</td><td>23</td></tr> </table>	S	M	T	W	TH	F	S	10	11	12	13	14	15	16	17	18	19	20	21	22	23	<p>THE BOOK OF JOB BILL ROBERTS • Author, management consultant 6:30-8:00 P.M.</p>	<input type="checkbox"/> @ \$85 = \$
S	M	T	W	TH	F	S																	
10	11	12	13	14	15	16																	
17	18	19	20	21	22	23																	

Please indicate the number of students enrolling and calculate the total for each course. If more than one person will be taking a course, include both names and addresses below. Make checks payable to Wesleyan University.

NAME		
ADDRESS		
CITY	STATE	ZIP
TELEPHONE	EMAIL ADDRESS	
NAME		
ADDRESS		
CITY	STATE	ZIP
TELEPHONE	EMAIL ADDRESS	

MAIL TO: Wesleyan Institute for Lifelong Learning
51 Lawn Avenue, Middletown, CT 06459
OR GO TO: wesleyan.edu/will for online credit card payment

QUESTIONS:
(860) 685-3005





ON THE COVER: PHILOSOPHY

THE PARABLES OF JESUS: Ancient Stories for Our Contemporary Times

For those willing to examine them, New Testament parables can offer a fresh perspective on our lives. Anyone of faith—or no faith—can engage the parables of Jesus in ways that astonish, provoke, renew, and spur compassionate action. Discover how these venerable parabolic tales of normalcy retain an uncanny power to reveal how the extraordinary resides in the ordinary.



HISTORY

CODE OF SILENCE: Voices of the African Enslaved in 19th-Century Connecticut

The year 2019 marks the 400th anniversary of the arrival of the first slave on American soil. And while history usually points to slavery as a condition endemic to the South, this daylong class explores the significant place of slavery in 19th-century Connecticut. The plight of African American slaves in the North is best told through narratives retrieved from historical records, many hiding in plain sight. Our experts will address the deeper, resonant story deserving to be heard.

FULL-DAY PROGRAM: SATURDAY, OCTOBER 5



NATURAL HISTORY

RAPTORS OVERHEAD: Avian Hunters in New England Skies



NATURAL HISTORY

DUCK!: Water Fowl in New England Ponds and Marshes

This two-part course by Audubon Center Bent of the River's director of education, follows up on previous classes, considering birds and other creatures found in the skies, woods, and waterways of Connecticut. A weekend or evening field session is included with each course, along with a live bird-of-prey program encounter.

TWO-PART COURSE: Double registration is recommended

 Wesleyan University
The Wesleyan Institute for Lifelong Learning

51 Lawn Avenue
Middletown, CT 06459
(860) 685-3005

NONPROFIT
U.S. POSTAGE
PAID
MIDDLETOWN, CT
PERMIT NO. 286

FALL 2019

wesleyan.edu/will

— CURIOSITY IS AGELESS —



FALL 2019
wesleyan.edu/will

— CURIOSITY IS AGELESS —